

CHESHAM STREET, BELGRAVIA, LONDON SW1

£1,995,000



MAYFAIR SQUARE

1 Mayfair Place, London W1J 8AJ, United Kingdom

+44 (0)207 184 9888 | info@mayfairsquare.co.uk | www.mayfairsquare.co.uk

CHESHAM STREET, BELGRAVIA, LONDON SW1

£1,995,000

PROPERTY DESCRIPTION

Luxury 3 bedroom apartment in the heart of Belgravia.

This luxury apartment has currently undergone a complete and meticulous refurbishment to attain the highest standards of luxury. Boasting three lavish bedrooms, it offers an expansive and beautifully designed reception room. The kitchen, fully integrated and accompanied by a dining area, presents a seamless blend of style and functionality.

The apartment offers three bedrooms, with the third serving as a versatile space suitable for a study or a cozy bedroom. Two bedrooms have en-suite facilities and an additional separate bathroom. The master bedroom stands out with its spaciousness and an inviting atrium that bathes the space in natural light. A luxurious en-suite bathroom enhances the master bedroom's elegance. The second bedroom also features its own luxury en-suite for added comfort and convenience. Arrange a private viewing with our team at Mayfair Square to see this exceptional apartment.

Living in Belgravia.

Nestled within London's most prestigious enclaves, Belgravia stands as an architectural masterpiece, an embodiment of grandeur. This illustrious district is gracefully positioned to the west of Buckingham Palace, bordered by the elegance of Knightsbridge to the north and the allure of Chelsea to the west.

A haven for shopping and culinary delights, Elizabeth Street, Motcomb Street, and Orange Square exude a charming village ambiance, hosting an array of exceptional restaurants and independent boutiques. Adding to its allure, Belgravia lies in close proximity to one of London's most opulent shopping destinations, boasting renowned names like Harrods, Harvey Nichols, and Sloane Street. Nature and relaxation find their sanctuary in the vastness of Hyde Park, home to the renowned Serpentine Lake, and offering an expansive 350 acres of lush greenery, mere steps away from Belgravia's elegant streets. Adding to the area's charm, the enchanting Belgrave Square Garden, the tranquil Chester Square Garden, and the graceful Eaton Square, adorned with stately London plane trees, provide serene oases amidst the urban landscape.

Tenure: Freehold

Please find the details below of Flat 4A Chesham Street:

Freehold

Lease: Until the year 2987

Area: 1500 sq. ft approx.

Price: £2,295,000



MAYFAIR SQUARE

1 Mayfair Place, London W1J 8AJ, United Kingdom

+44 (0)207 184 9888 | info@mayfairsquare.co.uk | www.mayfairsquare.co.uk

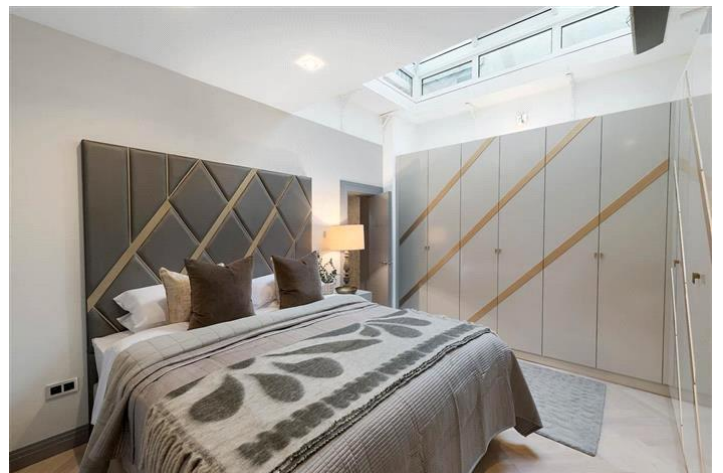
CHESHAM STREET, BELGRAVIA, LONDON SW1
£1,995,000



MAYFAIR SQUARE

1 Mayfair Place, London W1J 8AJ, United Kingdom

+44 (0)207 184 9888 | info@mayfairsquare.co.uk | www.mayfairsquare.co.uk



MAYFAIR SQUARE

1 Mayfair Place, London W1J 8AJ, United Kingdom

+44 (0)207 184 9888 | info@mayfairsquare.co.uk | www.mayfairsquare.co.uk



MAYFAIR SQUARE

1 Mayfair Place, London W1J 8AJ, United Kingdom

+44 (0)207 184 9888 | info@mayfairsquare.co.uk | www.mayfairsquare.co.uk



MAYFAIR SQUARE

1 Mayfair Place, London W1J 8AJ, United Kingdom

+44 (0)207 184 9888 | info@mayfairsquare.co.uk | www.mayfairsquare.co.uk

Approximate Gross Internal Area
1,340 sq ft / 124.49 sq m
excluding external vault and utility

External Utility Area
63 sq ft / 5.85 sq m

External Vault Area
76 sq ft / 7.06 sq m

Total Approximate Gross Internal Area
1,479 sq ft / 137.40 sq m



© Alex Wainwright Photography



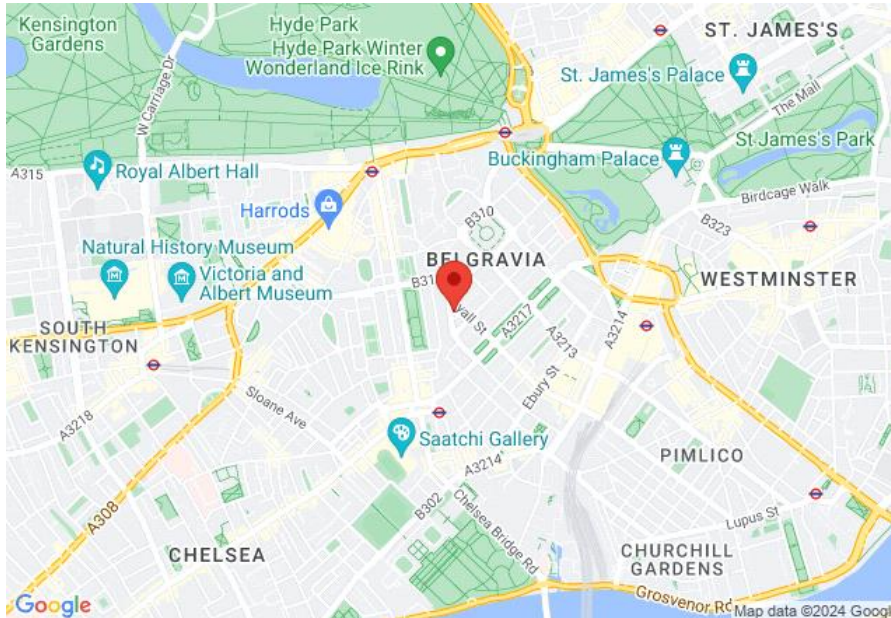
MAYFAIR SQUARE

1 Mayfair Place, London W1J 8AJ, United Kingdom

+44 (0)207 184 9888 | info@mayfairsquare.co.uk | www.mayfairsquare.co.uk

CHESHAM STREET, BELGRAVIA, LONDON SW1

£1,995,000



Energy Efficiency Rating		
	Current	Potential
Very energy efficient - lower running costs		
(92-100) A		
(81-91) B		
(69-80) C		77
(55-68) D		
(39-54) E	42	
(21-38) F		
(1-20) G		
Not energy efficient - higher running costs		
England & Wales	EU Directive 2002/91/EC	

The energy efficiency rating is a measure of the overall efficiency of a home. The higher the rating the more energy efficient the home is and the lower the fuel bills will be.



MAYFAIR SQUARE

1 Mayfair Place, London W1J 8AJ, United Kingdom

+44 (0)207 184 9888 | info@mayfairsquare.co.uk | www.mayfairsquare.co.uk

CHESHAM STREET, BELGRAVIA, LONDON SW1
£1,995,000

FOR MORE INFORMATION PLEASE CONTACT US

Important Notice:

Particulars: These particulars are not an offer or contract, nor part of one. You should not rely on statements by Mayfair Square in the particulars or by word of mouth or in writing ("information") as being factually accurate about the property, its condition or its value. Neither Mayfair Square nor any joint agent has any authority to make any representations about the property, and accordingly any information given is entirely without responsibility on the part of the agents, seller(s), lessor(s) or landlord(s).

Any areas, measurements or distances are approximate. The text, photographs and plans are for guidance only and are not necessarily comprehensive. Regulations etc: Any reference to alterations to, or use of, any part of the property does not mean that any necessary planning, building regulations or other consent has been obtained. A buyer or lessee must find out by inspection or in other ways that these matters have been properly dealt with and that all information is correct.



MAYFAIR SQUARE

1 Mayfair Place, London W1J 8AJ, United Kingdom

+44 (0)207 184 9888 | info@mayfairsquare.co.uk | www.mayfairsquare.co.uk
