

GREAT PORTLAND STREET, MARYLEBONE, LONDON W1

£1,515,000



MAYFAIR SQUARE

1 Mayfair Place, London W1J 8AJ, United Kingdom

+44 (0)207 184 9888 | info@mayfairsquare.co.uk | www.mayfairsquare.co.uk

GREAT PORTLAND STREET, MARYLEBONE, LONDON W1

£1,515,000

PROPERTY DESCRIPTION

Experience the perfect blend of contemporary design and classic elegance in this new luxury residential development in Marylebone.

Located in prime central London, this residential development offers luxurious living to meet the needs of discerning individuals, professional couples, and modern families.

We have a selection of 1 bedroom apartments in this new development. The development will be based over 9-storeys and consists of 37 private residential apartments and allocated with two basement levels for parking.

Local Area - Marylebone Village

Period architecture and attractive green spaces, Marylebone Village offers a variety of shopping, eating and lifestyle experiences.

Among the cultural and lifestyle activities available to residents are art exhibitions, exercise classes, masterclasses, collaborations, and promotions hosted by local shops and restaurants, most of which are also part of Howard de Walden's major community events: the Marylebone Food Festival, the Marylebone Design District, the Marylebone Summer Festival, and the Marylebone Christmas Lights. Please note photographs are CGI's (Computer-generated imagery) and only for guidance.



MAYFAIR SQUARE

1 Mayfair Place, London W1J 8AJ, United Kingdom

+44 (0)207 184 9888 | info@mayfairsquare.co.uk | www.mayfairsquare.co.uk

GREAT PORTLAND STREET, MARYLEBONE, LONDON W1
£1,515,000



MAYFAIR SQUARE

1 Mayfair Place, London W1J 8AJ, United Kingdom

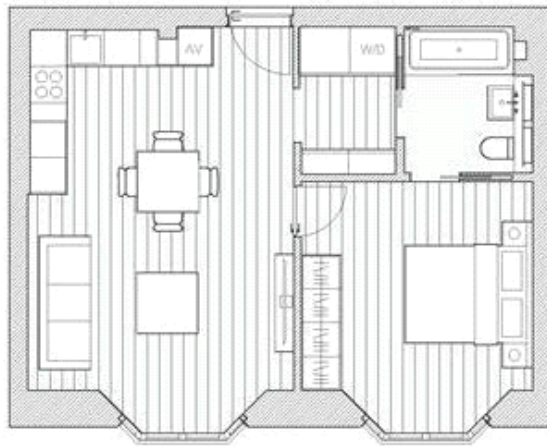
+44 (0)207 184 9888 | info@mayfairsquare.co.uk | www.mayfairsquare.co.uk



MAYFAIR SQUARE

1 Mayfair Place, London W1J 8AJ, United Kingdom

+44 (0)207 184 9888 | info@mayfairsquare.co.uk | www.mayfairsquare.co.uk



MAYFAIR SQUARE

1 Mayfair Place, London W1J 8AJ, United Kingdom

+44 (0)207 184 9888 | info@mayfairsquare.co.uk | www.mayfairsquare.co.uk

GREAT PORTLAND STREET, MARYLEBONE, LONDON W1

£1,515,000



MAYFAIR SQUARE

1 Mayfair Place, London W1J 8AJ, United Kingdom

+44 (0)207 184 9888 | info@mayfairsquare.co.uk | www.mayfairsquare.co.uk

GREAT PORTLAND STREET, MARYLEBONE, LONDON W1
£1,515,000

FOR MORE INFORMATION PLEASE CONTACT US

Important Notice:

Particulars: These particulars are not an offer or contract, nor part of one. You should not rely on statements by Mayfair Square in the particulars or by word of mouth or in writing ("information") as being factually accurate about the property, its condition or its value. Neither Mayfair Square nor any joint agent has any authority to make any representations about the property, and accordingly any information given is entirely without responsibility on the part of the agents, seller(s), lessor(s) or landlord(s).

Any areas, measurements or distances are approximate. The text, photographs and plans are for guidance only and are not necessarily comprehensive. Regulations etc: Any reference to alterations to, or use of, any part of the property does not mean that any necessary planning, building regulations or other consent has been obtained. A buyer or lessee must find out by inspection or in other ways that these matters have been properly dealt with and that all information is correct.



MAYFAIR SQUARE

1 Mayfair Place, London W1J 8AJ, United Kingdom

+44 (0)207 184 9888 | info@mayfairsquare.co.uk | www.mayfairsquare.co.uk
