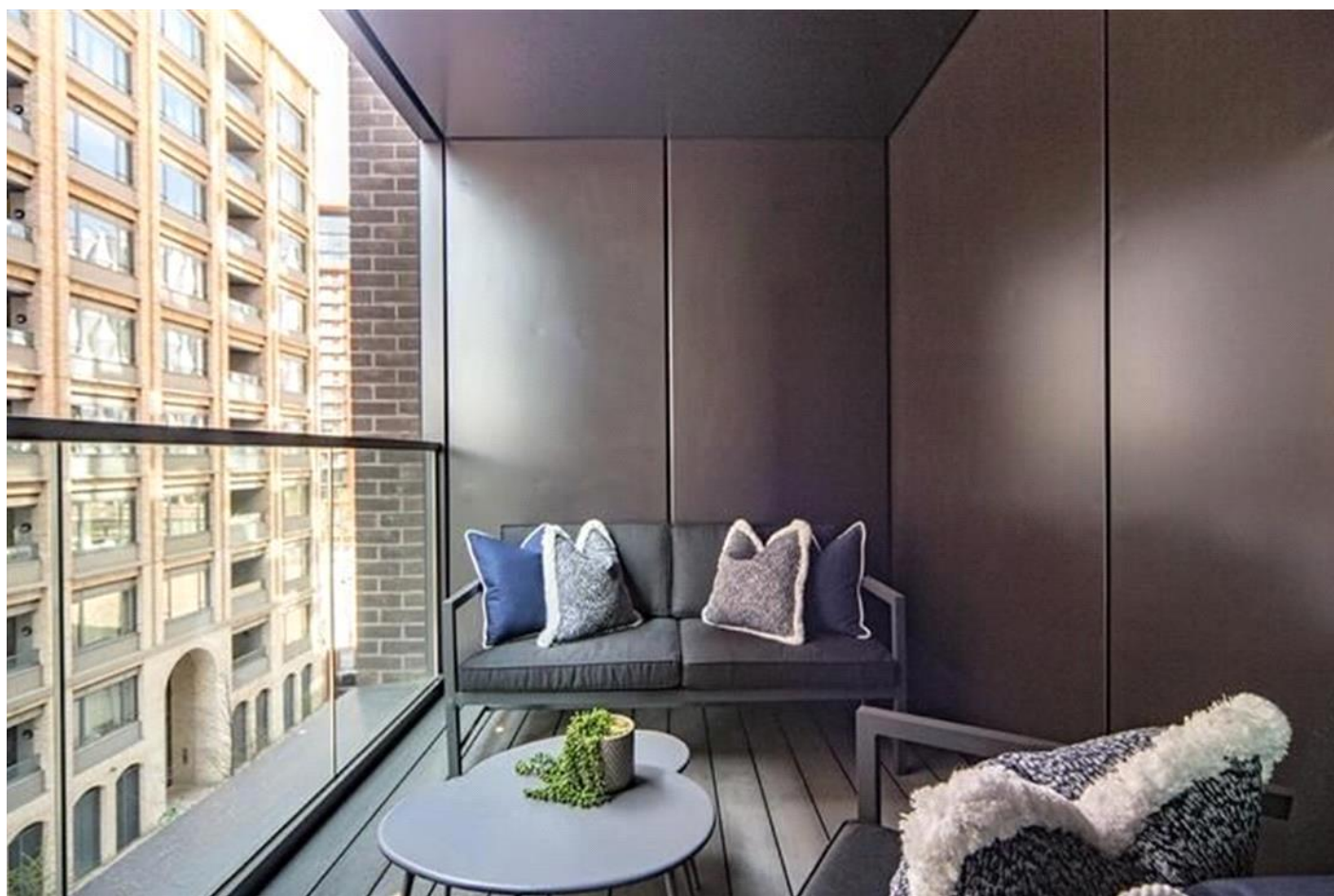


CHARLES CLOWES WALK, LONDON SW11

£1,010 PW



**MAYFAIR SQUARE**

1 Mayfair Place, London W1J 8AJ, United Kingdom

+44 (0)207 184 9888 | [info@mayfairsquare.co.uk](mailto:info@mayfairsquare.co.uk) | [www.mayfairsquare.co.uk](http://www.mayfairsquare.co.uk)

# CHARLES CLOWES WALK, LONDON SW11

£1,010 PW

---

## PROPERTY DESCRIPTION

An excellent two-bedroom apartment located in Nine Elms on London's iconic South Bank.

Boasting two double bedrooms and two bathrooms, this impressive apartment is located on the 1st floor. With a dedicated concierge, lift service, gym, media room, board room, and secure underground parking, this prestigious building offers an array of amenities.

The apartment boasts a spacious reception area equipped with Samsung Smart TVs and Bose sound bars, featuring built-in Amazon Alexa to control the lighting, TV, and heating systems. The open-plan reception room includes a fully fitted kitchen with integrated AEG appliances and floor-to-ceiling windows. The apartment offers two double bedrooms and two bathrooms, one of which is an en-suite from the master bedroom. Additionally, there is a private balcony accessible from the reception area and one of the bedrooms. The apartment also benefits from ample storage space.

Residents can enjoy the exclusive amenities within this luxury development, including a well-equipped gym, a media room, a board room, and secure underground parking. Additionally, the private landscaped podium gardens provide a tranquil retreat.

This residential development draws inspiration from the iconic skyscrapers of New York City and is located in Zone 1, offering convenient access to two new Northern Line underground stations. With tree-lined footpaths, dedicated cycle lanes, the Clipper river service, local buses, and the nearby Pimlico bridge, transportation options abound, connecting you effortlessly to the neighbouring Royal Boroughs of Kensington and Chelsea.



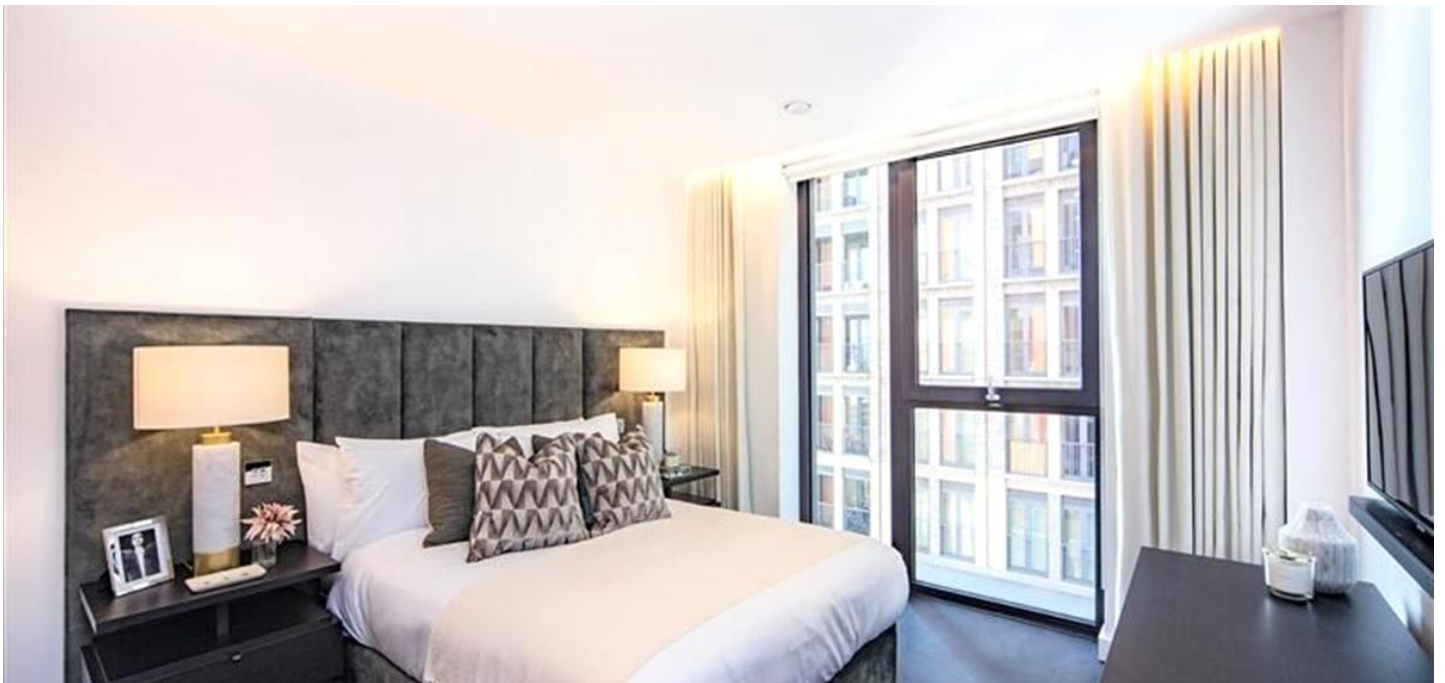
## MAYFAIR SQUARE

1 Mayfair Place, London W1J 8AJ, United Kingdom

+44 (0)207 184 9888 | [info@mayfairsquare.co.uk](mailto:info@mayfairsquare.co.uk) | [www.mayfairsquare.co.uk](http://www.mayfairsquare.co.uk)

---

CHARLES CLOWES WALK, LONDON SW11  
£1,010 PW



**MAYFAIR SQUARE**

1 Mayfair Place, London W1J 8AJ, United Kingdom

+44 (0)207 184 9888 | [info@mayfairsquare.co.uk](mailto:info@mayfairsquare.co.uk) | [www.mayfairsquare.co.uk](http://www.mayfairsquare.co.uk)



## MAYFAIR SQUARE

1 Mayfair Place, London W1J 8AJ, United Kingdom

+44 (0)207 184 9888 | [info@mayfairsquare.co.uk](mailto:info@mayfairsquare.co.uk) | [www.mayfairsquare.co.uk](http://www.mayfairsquare.co.uk)



FIRST FLOOR

<p>APPROX. GROSS INTERNAL AREA *          Apartment - 886 Ft<sup>2</sup> - 82.31 M<sup>2</sup>          Balcony - 43 Ft<sup>2</sup> - 3.99 M<sup>2</sup></p>	<p>Property Details  <b>APARTMENT 4</b>  <b>THORNES HOUSE</b>  <b>4 CHARLES CLOWES WALK</b>  <b>LONDON</b>  <b>SW11 7AG</b></p>	<p>Measured and Drawn By  <b>BKR</b>          Hilsenray Work Space          1 Empire Mews          London          SW16 2BF</p>
	<p>Plans Drawn: 29.01.2019</p>	<p>Tel: 0345 257 2033  <a href="mailto:info@bkrfloorplans.co.uk">info@bkrfloorplans.co.uk</a>  <a href="http://www.bkrfloorplans.co.uk">www.bkrfloorplans.co.uk</a>          © BKR 2019</p>



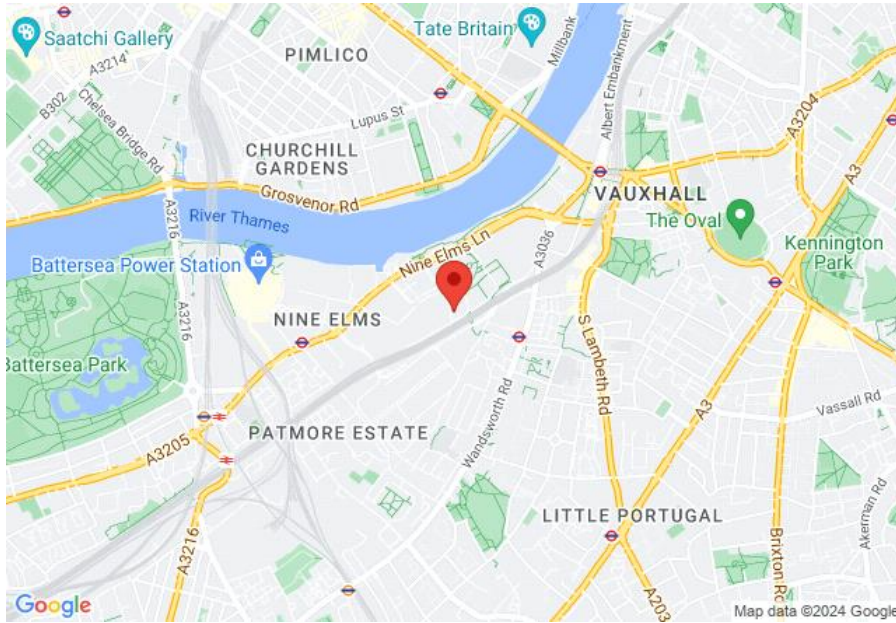
# MAYFAIR SQUARE

1 Mayfair Place, London W1J 8AJ, United Kingdom

+44 (0)207 184 9888 | [info@mayfairsquare.co.uk](mailto:info@mayfairsquare.co.uk) | [www.mayfairsquare.co.uk](http://www.mayfairsquare.co.uk)

# CHARLES CLOWES WALK, LONDON SW11

## £1,010 PW



Energy Efficiency Rating		
	Current	Potential
Very energy efficient - lower running costs		
(92-100) <b>A</b>		
(81-91) <b>B</b>	<b>86</b>	<b>86</b>
(69-80) <b>C</b>		
(55-68) <b>D</b>		
(39-54) <b>E</b>		
(21-38) <b>F</b>		
(1-20) <b>G</b>		
Not energy efficient - higher running costs		
<b>England &amp; Wales</b>	EU Directive 2002/91/EC	

The energy efficiency rating is a measure of the overall efficiency of a home. The higher the rating the more energy efficient the home is and the lower the fuel bills will be.



## MAYFAIR SQUARE

1 Mayfair Place, London W1J 8AJ, United Kingdom

+44 (0)207 184 9888 | [info@mayfairsquare.co.uk](mailto:info@mayfairsquare.co.uk) | [www.mayfairsquare.co.uk](http://www.mayfairsquare.co.uk)

CHARLES CLOWES WALK, LONDON SW11  
£1,010 PW

---

FOR MORE INFORMATION PLEASE CONTACT US

Important Notice:

Particulars: These particulars are not an offer or contract, nor part of one. You should not rely on statements by Mayfair Square in the particulars or by word of mouth or in writing ("information") as being factually accurate about the property, its condition or its value. Neither Mayfair Square nor any joint agent has any authority to make any representations about the property, and accordingly any information given is entirely without responsibility on the part of the agents, seller(s), lessor(s) or landlord(s).

Any areas, measurements or distances are approximate. The text, photographs and plans are for guidance only and are not necessarily comprehensive. Regulations etc: Any reference to alterations to, or use of, any part of the property does not mean that any necessary planning, building regulations or other consent has been obtained. A buyer or lessee must find out by inspection or in other ways that these matters have been properly dealt with and that all information is correct.



**MAYFAIR SQUARE**

1 Mayfair Place, London W1J 8AJ, United Kingdom

+44 (0)207 184 9888 | [info@mayfairsquare.co.uk](mailto:info@mayfairsquare.co.uk) | [www.mayfairsquare.co.uk](http://www.mayfairsquare.co.uk)

---