

MOUNT STREET, MAYFAIR, LONDON W1
£2,800 PW



MAYFAIR SQUARE

1 Mayfair Place, London W1J 8AJ, United Kingdom

+44 (0)207 184 9888 | info@mayfairsquare.co.uk | www.mayfairsquare.co.uk

MOUNT STREET, MAYFAIR, LONDON W1

£2,800 PW

PROPERTY DESCRIPTION

Located on Mount Street, a beautiful apartment with 3 bedrooms and 3 bathrooms. It features a large double reception room, a separate modern kitchen, and three bedroom suites with en-suite bathrooms, all with high ceilings, wooden floors, and large bay windows overlooking Mount Street.

LOCAL AREA AMENITIES:

You can find some of the most exclusive restaurants, swanky bars, and designer shops in Mayfair. Some of the most exclusive brands can be found in Mayfair, from Louis Vuitton, Gucci, Bulgari, Chanel, Hermes, De Beers, Graff to Rolex. Mayfair also has its own luxury department store Fortnum & Mason.

Although Mayfair is a small area in size, it has over 20 Michelin starred restaurants run by some of the finest chefs in the world.

LOCAL TRANSPORT LINKS:

The closest underground stations are Green Park, Bond Street and various bus routes nearby.



MAYFAIR SQUARE

1 Mayfair Place, London W1J 8AJ, United Kingdom

+44 (0)207 184 9888 | info@mayfairsquare.co.uk | www.mayfairsquare.co.uk

MOUNT STREET, MAYFAIR, LONDON W1
£2,800 PW



MAYFAIR SQUARE

1 Mayfair Place, London W1J 8AJ, United Kingdom

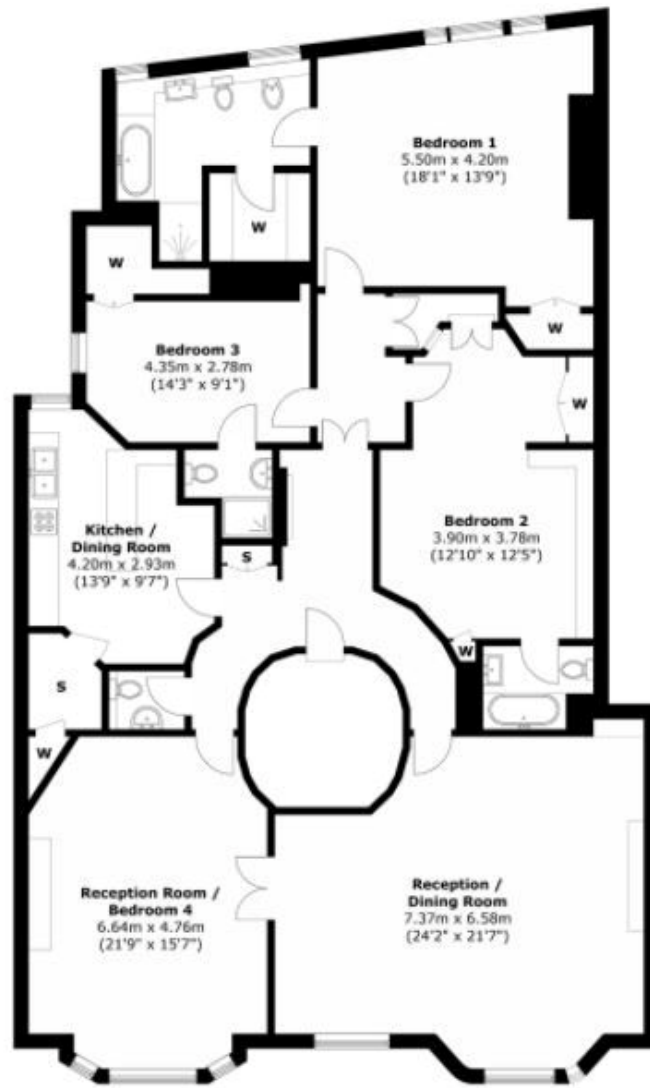
+44 (0)207 184 9888 | info@mayfairsquare.co.uk | www.mayfairsquare.co.uk



MAYFAIR SQUARE

1 Mayfair Place, London W1J 8AJ, United Kingdom

+44 (0)207 184 9888 | info@mayfairsquare.co.uk | www.mayfairsquare.co.uk



Second Floor

Total area (approx.): 203.6 sq. m (2191.2 sq. ft)



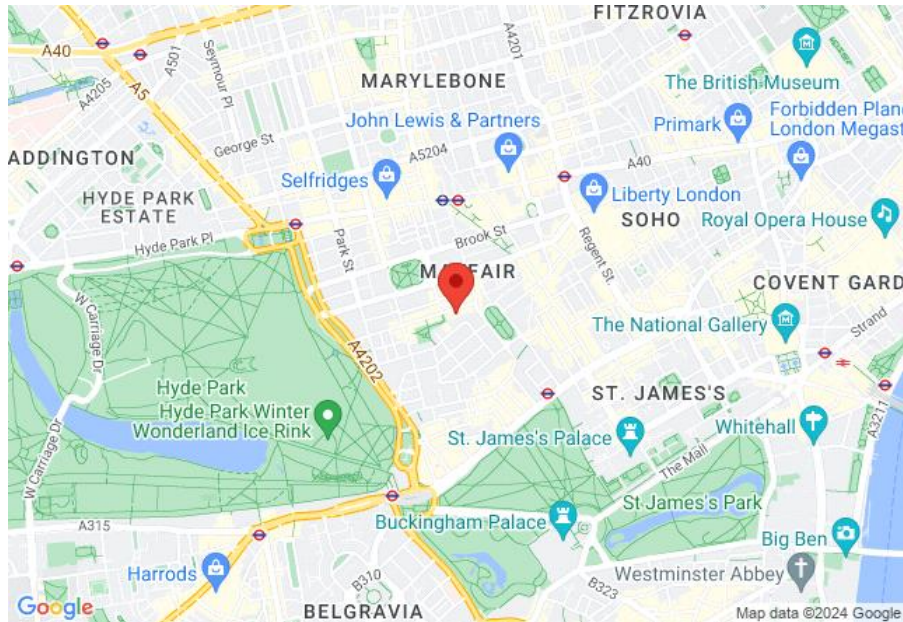
MAYFAIR SQUARE


1 Mayfair Place, London W1J 8AJ, United Kingdom

+44 (0)207 184 9888 | info@mayfairsquare.co.uk | www.mayfairsquare.co.uk

MOUNT STREET, MAYFAIR, LONDON W1

£2,800 PW



Energy Efficiency Rating		
	Current	Potential
<i>Very energy efficient - lower running costs</i>		
(92-100) A		
(81-91) B		86
(69-80) C	76	
(55-68) D		
(39-54) E		
(21-38) F		
(1-20) G		
<i>Not energy efficient - higher running costs</i>		
England & Wales	EU Directive 2002/91/EC 	

The energy efficiency rating is a measure of the overall efficiency of a home. The higher the rating the more energy efficient the home is and the lower the fuel bills will be.



MAYFAIR SQUARE

1 Mayfair Place, London W1J 8AJ, United Kingdom

+44 (0)207 184 9888 | info@mayfairsquare.co.uk | www.mayfairsquare.co.uk

MOUNT STREET, MAYFAIR, LONDON W1
£2,800 PW

FOR MORE INFORMATION PLEASE CONTACT US

Important Notice:

Particulars: These particulars are not an offer or contract, nor part of one. You should not rely on statements by Mayfair Square in the particulars or by word of mouth or in writing ("information") as being factually accurate about the property, its condition or its value. Neither Mayfair Square nor any joint agent has any authority to make any representations about the property, and accordingly any information given is entirely without responsibility on the part of the agents, seller(s), lessor(s) or landlord(s).

Any areas, measurements or distances are approximate. The text, photographs and plans are for guidance only and are not necessarily comprehensive. Regulations etc: Any reference to alterations to, or use of, any part of the property does not mean that any necessary planning, building regulations or other consent has been obtained. A buyer or lessee must find out by inspection or in other ways that these matters have been properly dealt with and that all information is correct.



MAYFAIR SQUARE

1 Mayfair Place, London W1J 8AJ, United Kingdom

+44 (0)207 184 9888 | info@mayfairsquare.co.uk | www.mayfairsquare.co.uk
