

EATON SQUARE, BELGRAVIA, LONDON SW1  
£3,000 PW



**MAYFAIR SQUARE**

1 Mayfair Place, London W1J 8AJ, United Kingdom

+44 (0)207 184 9888 | [info@mayfairsquare.co.uk](mailto:info@mayfairsquare.co.uk) | [www.mayfairsquare.co.uk](http://www.mayfairsquare.co.uk)

# EATON SQUARE, BELGRAVIA, LONDON SW1

## £3,000 PW

---

### PROPERTY DESCRIPTION

Eaton Square, located in London's Belgravia district, is considered to be one of the most sought-after prime residential areas in London.

This beautiful one bedroom apartment, located in Eaton Square, has an exclusive private garden and spans approximately 738 sq ft and boasts excellent condition throughout.

The apartment features a spacious master bedroom with an en-suite and private access to the garden through French doors.

The kitchen is fully equipped and there is a large reception room that opens to the private garden. Additionally, there is a guest bathroom in the apartment.

The common areas of the building are impressive and include amenities such as an elevator for passengers, a dedicated porter, and around-the-clock security.

### VIEWING HIGHLY RECOMMENDED

Living in Belgravia.

Belgravia is one of London's grandest areas, Belgravia is an architectural jewel. Belgravia sits on the west of Buckingham Palace. On the north, it has Knightsbridge, and on the west, Chelsea.

#### Shopping and Eating Out

Elizabeth Street, Motcomb Street and Orange Square have a village atmosphere with a wide selection of excellent restaurants and independent boutiques. Belgravia is also a stone throw away from one of London's most luxurious shopping area which includes Harrods, Harvey Nichols and Sloane Street.

#### Parks & Green Spaces

Open space of Hyde Park, which has the famous Serpentine Lake, and offering 350 acres of green space are short walk away.

Beautiful Belgrave Square Garden, Chester Square Garden and Eaton Square with lofty London plane trees.

Garden details: Private Garden



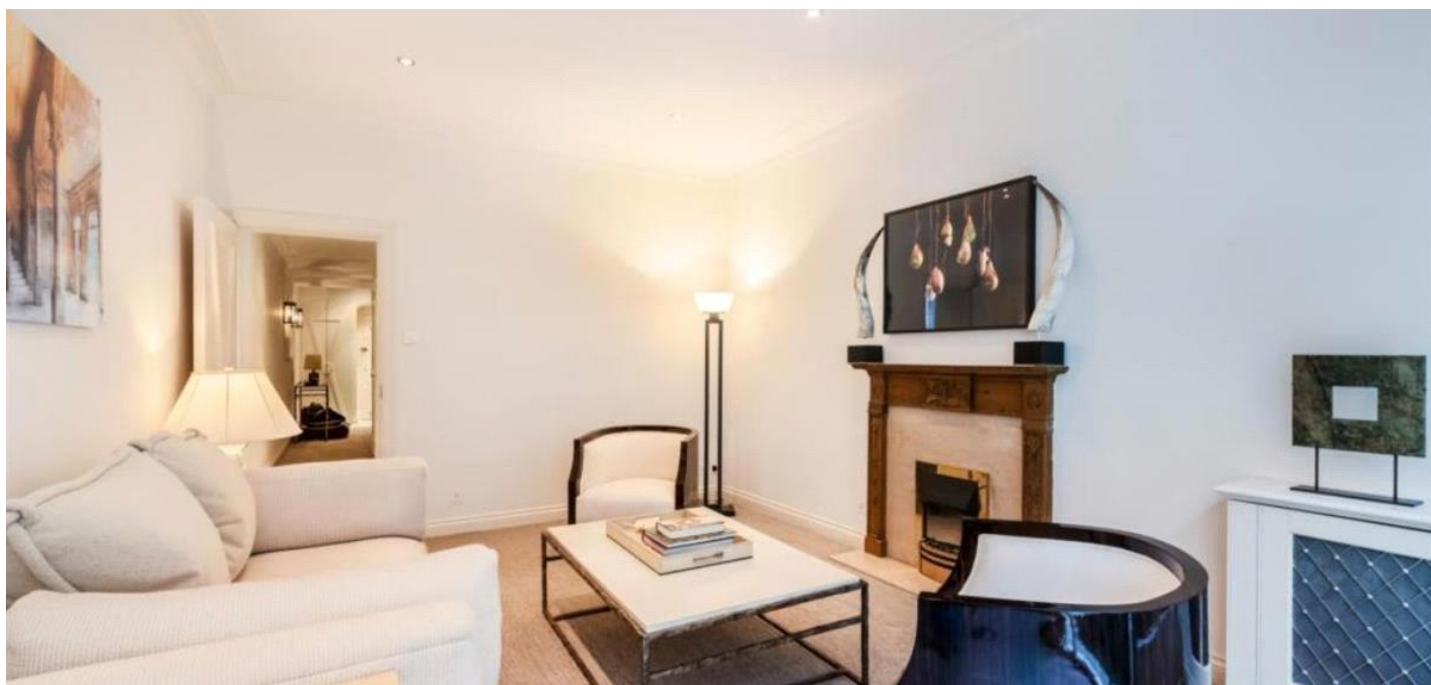
## MAYFAIR SQUARE

1 Mayfair Place, London W1J 8AJ, United Kingdom

+44 (0)207 184 9888 | [info@mayfairsquare.co.uk](mailto:info@mayfairsquare.co.uk) | [www.mayfairsquare.co.uk](http://www.mayfairsquare.co.uk)

---

EATON SQUARE, BELGRAVIA, LONDON SW1  
£3,000 PW



**MAYFAIR SQUARE**

1 Mayfair Place, London W1J 8AJ, United Kingdom

+44 (0)207 184 9888 | [info@mayfairsquare.co.uk](mailto:info@mayfairsquare.co.uk) | [www.mayfairsquare.co.uk](http://www.mayfairsquare.co.uk)



## MAYFAIR SQUARE

1 Mayfair Place, London W1J 8AJ, United Kingdom

+44 (0)207 184 9888 | [info@mayfairsquare.co.uk](mailto:info@mayfairsquare.co.uk) | [www.mayfairsquare.co.uk](http://www.mayfairsquare.co.uk)

Eaton Square, SW1W  
Approximate Gross Internal Area  
68.60 sq m / 738 sq ft

( CH = Ceiling Heights )



Lower Ground Floor



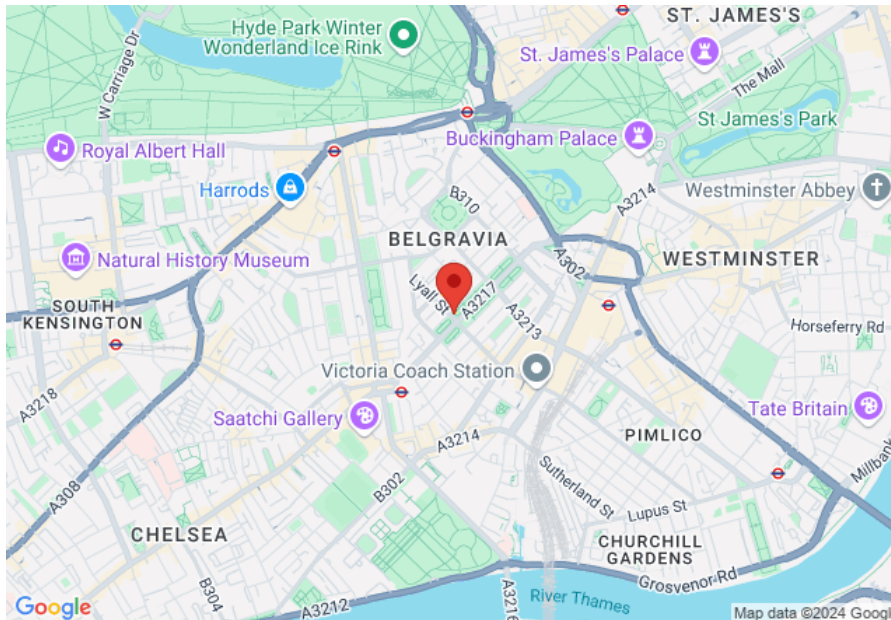
## MAYFAIR SQUARE

1 Mayfair Place, London W1J 8AJ, United Kingdom

+44 (0)207 184 9888 | [info@mayfairsquare.co.uk](mailto:info@mayfairsquare.co.uk) | [www.mayfairsquare.co.uk](http://www.mayfairsquare.co.uk)

# EATON SQUARE, BELGRAVIA, LONDON SW1

## £3,000 PW



Energy Efficiency Rating		
	Current	Potential
Very energy efficient - lower running costs		
(92-100) <b>A</b>		
(81-91) <b>B</b>		
(69-80) <b>C</b>		<b>76</b>
(55-68) <b>D</b>		
(39-54) <b>E</b>	<b>39</b>	
(21-38) <b>F</b>		
(1-20) <b>G</b>		
Not energy efficient - higher running costs		
<b>England &amp; Wales</b>	EU Directive 2002/91/EC	

The energy efficiency rating is a measure of the overall efficiency of a home. The higher the rating the more energy efficient the home is and the lower the fuel bills will be.



## MAYFAIR SQUARE

1 Mayfair Place, London W1J 8AJ, United Kingdom

+44 (0)207 184 9888 | info@mayfairsquare.co.uk | www.mayfairsquare.co.uk

# EATON SQUARE, BELGRAVIA, LONDON SW1

## £3,000 PW

---

FOR MORE INFORMATION PLEASE CONTACT US

### Important Notice:

Particulars: These particulars are not an offer or contract, nor part of one. You should not rely on statements by Mayfair Square in the particulars or by word of mouth or in writing ("information") as being factually accurate about the property, its condition or its value. Neither Mayfair Square nor any joint agent has any authority to make any representations about the property, and accordingly any information given is entirely without responsibility on the part of the agents, seller(s), lessor(s) or landlord(s).

Any areas, measurements or distances are approximate. The text, photographs and plans are for guidance only and are not necessarily comprehensive. Regulations etc: Any reference to alterations to, or use of, any part of the property does not mean that any necessary planning, building regulations or other consent has been obtained. A buyer or lessee must find out by inspection or in other ways that these matters have been properly dealt with and that all information is correct.



## MAYFAIR SQUARE

1 Mayfair Place, London W1J 8AJ, United Kingdom

+44 (0)207 184 9888 | [info@mayfairsquare.co.uk](mailto:info@mayfairsquare.co.uk) | [www.mayfairsquare.co.uk](http://www.mayfairsquare.co.uk)

---