

PRINCE OF WALES TERRACE, LONDON W8  
£4,500 PW



**MAYFAIR SQUARE**

1 Mayfair Place, London W1J 8AJ, United Kingdom

+44 (0)207 184 9888 | [info@mayfairsquare.co.uk](mailto:info@mayfairsquare.co.uk) | [www.mayfairsquare.co.uk](http://www.mayfairsquare.co.uk)

# PRINCE OF WALES TERRACE, LONDON W8

£4,500 PW

---

## PROPERTY DESCRIPTION

Luxury 3 Bedroom Duplex Penthouse in Kensington.

This magnificent duplex apartment spans an impressive 1,299 sq. ft and offers breathtaking views over Hyde Park and the London skyline. Meticulously designed with impeccable attention to detail, it exemplifies the highest standard of modern living.

As you enter, you are greeted by a grand hallway that leads to the beautifully appointed bedrooms, each boasting its own ensuite bathroom. These luxurious bathrooms feature exquisite natural marble, bespoke vanity units, mirrored cabinets, indulgent bathtubs or walk-in showers, Aquavision TVs, Zuchetti Italian designer chrome ware with 200mm rainfall shower heads, and Toto-style Vitra V-care WC with automatic open/close seat lid.

Ascending to the upper floor, you will discover a sleek and stylish fitted kitchen adorned with Carrara quartz worktops and Cohiba marble surfaces. The bespoke high-gloss veneered kitchens are equipped with top-of-the-line Gaggenau and Miele appliances. A bespoke breakfast bar and dining table, capable of accommodating up to six guests, create the perfect space for culinary delights and entertaining. The open-plan kitchen seamlessly connects to the spacious living room, which features an elevated snug area, providing a versatile and inviting space for relaxation.

The full-height Schuco sliding glazed doors open up to a roof terrace, where you can enjoy the outdoors and take in the stunning views. This outdoor oasis is complete with an enticing bio-fuel fire pit and a 55" Samsung Terrace 4K QLED Outdoor Smart TV, ensuring memorable moments with friends and family.

The Penthouse is equipped with advanced technology to enhance your living experience. Crestron smart touchscreen controls allow you to effortlessly operate the AV/Music, DALI lighting, Penthouse door controls, heating/comfort cooling systems, CCTV access, and curtains. The integration of Alexa voice control with Crestron further simplifies the control of your environment.

Entertainment is taken to the next level with Samsung Smart televisions and Apple TV in the reception area, 50" Samsung Smart televisions in the primary bedrooms, 43" Samsung televisions in the second bedrooms, and 32" Aqua Vision televisions in the primary bathrooms. A 5.1 surround-sound Sonos system with a Sonos soundbar complements the televisions in the reception area, while Wi-Fi connectivity, BT telephone lines, high-speed Virgin broadband, and an iPad for Crestron system control ensure seamless connectivity throughout.

Prince of Wales Terrace is nestled in a tranquil cul-de-sac, just moments away from the serene surroundings of Kensington Gardens and Hyde Park. Additionally, the vibrant atmosphere of Kensington High Street and Notting Hill is within easy walking distance, providing an abundance of dining, shopping, and entertainment options.

Indulge in the ultimate luxury lifestyle at The Penthouse, where sophistication and comfort seamlessly blend to create an extraordinary living experience.



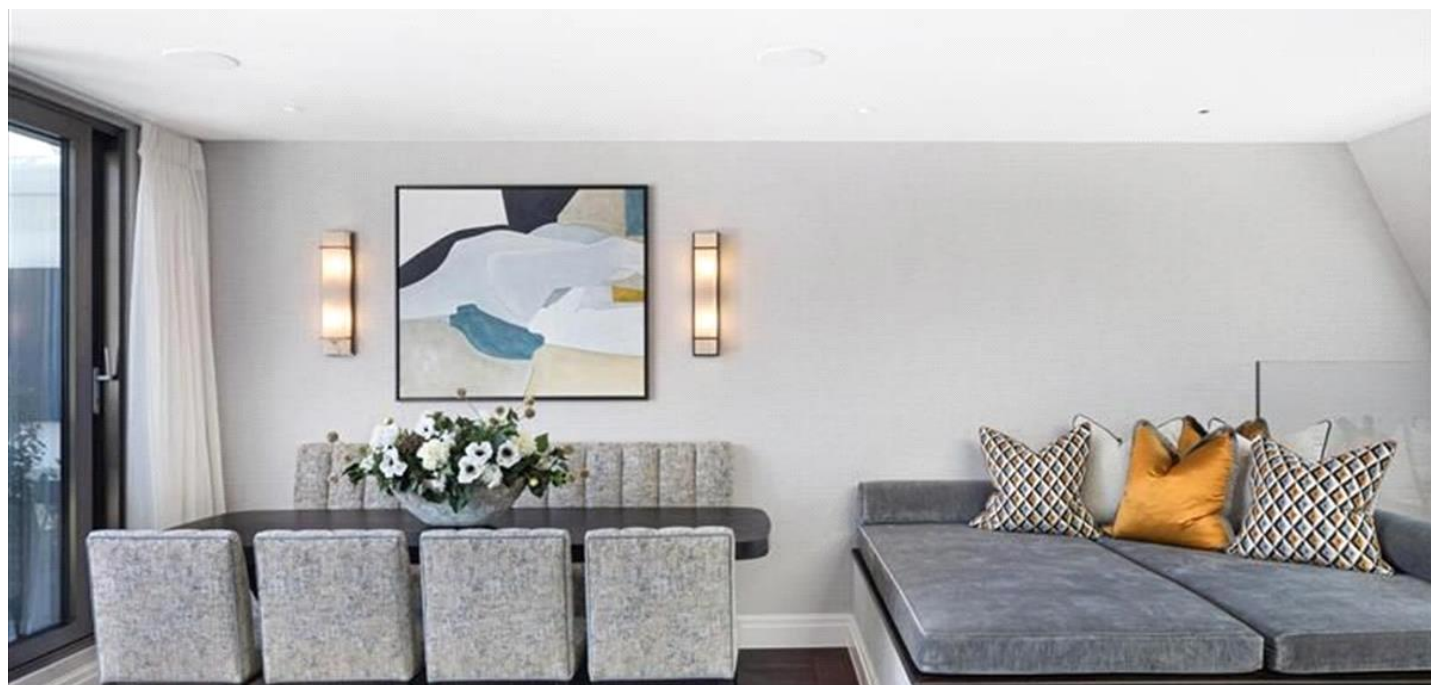
## MAYFAIR SQUARE

1 Mayfair Place, London W1J 8AJ, United Kingdom

+44 (0)207 184 9888 | [info@mayfairsquare.co.uk](mailto:info@mayfairsquare.co.uk) | [www.mayfairsquare.co.uk](http://www.mayfairsquare.co.uk)

---

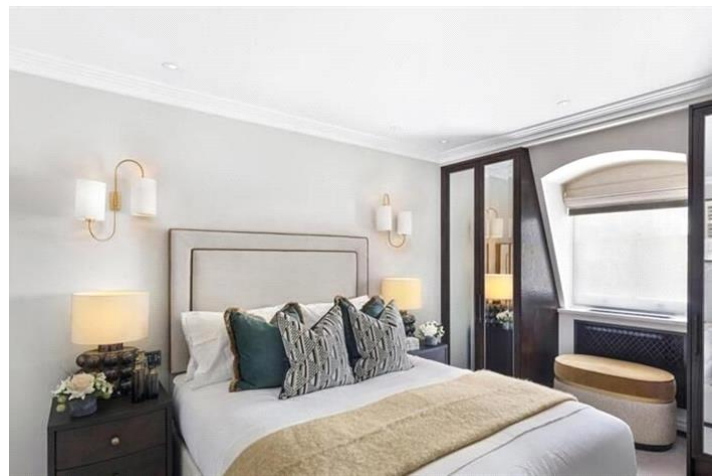
PRINCE OF WALES TERRACE, LONDON W8  
£4,500 PW



**MAYFAIR SQUARE**

1 Mayfair Place, London W1J 8AJ, United Kingdom

+44 (0)207 184 9888 | [info@mayfairsquare.co.uk](mailto:info@mayfairsquare.co.uk) | [www.mayfairsquare.co.uk](http://www.mayfairsquare.co.uk)



## MAYFAIR SQUARE

1 Mayfair Place, London W1J 8AJ, United Kingdom

+44 (0)207 184 9888 | [info@mayfairsquare.co.uk](mailto:info@mayfairsquare.co.uk) | [www.mayfairsquare.co.uk](http://www.mayfairsquare.co.uk)



# MAYFAIR SQUARE

1 Mayfair Place, London W1J 8AJ, United Kingdom

+44 (0)207 184 9888 | [info@mayfairsquare.co.uk](mailto:info@mayfairsquare.co.uk) | [www.mayfairsquare.co.uk](http://www.mayfairsquare.co.uk)

Key :-

W - Wardrobe

JJ - Juliette Balcony



FOURTH FLOOR



FIFTH FLOOR

APPROX. GROSS INTERNAL AREA\*  
1289 Ft<sup>2</sup> - 121.81 M<sup>2</sup>

Project Data:

DUPLEX WEST PENTHOUSE N  
21-22 PRINCE OF WALES TERRACE  
LONDON  
W8 5PQ

SCALE

1:100 @ A4

Plans Drawn: 24.06.2020

Company Details:

**BKR**

Helen, Work Space  
11 Upper Green  
London  
SW10 2LL

Tel: 020 757 7370  
www.bkr.co.uk  
020 757 7370

© 1997-2020



# MAYFAIR SQUARE

1 Mayfair Place, London W1J 8AJ, United Kingdom

+44 (0)207 184 9888 | [info@mayfairsquare.co.uk](mailto:info@mayfairsquare.co.uk) | [www.mayfairsquare.co.uk](http://www.mayfairsquare.co.uk)

# PRINCE OF WALES TERRACE, LONDON W8

£4,500 PW



Energy Efficiency Rating		
	Current	Potential
Very energy efficient - lower running costs		
(92-100) <b>A</b>		
(81-91) <b>B</b>		
(69-80) <b>C</b>	<b>78</b>	<b>78</b>
(55-68) <b>D</b>		
(39-54) <b>E</b>		
(21-38) <b>F</b>		
(1-20) <b>G</b>		
Not energy efficient - higher running costs		
<b>England &amp; Wales</b>	EU Directive 2002/91/EC	

The energy efficiency rating is a measure of the overall efficiency of a home. The higher the rating the more energy efficient the home is and the lower the fuel bills will be.



## MAYFAIR SQUARE

1 Mayfair Place, London W1J 8AJ, United Kingdom

+44 (0)207 184 9888 | info@mayfairsquare.co.uk | www.mayfairsquare.co.uk

# PRINCE OF WALES TERRACE, LONDON W8

## £4,500 PW

---

FOR MORE INFORMATION PLEASE CONTACT US

### Important Notice:

Particulars: These particulars are not an offer or contract, nor part of one. You should not rely on statements by Mayfair Square in the particulars or by word of mouth or in writing ("information") as being factually accurate about the property, its condition or its value. Neither Mayfair Square nor any joint agent has any authority to make any representations about the property, and accordingly any information given is entirely without responsibility on the part of the agents, seller(s), lessor(s) or landlord(s).

Any areas, measurements or distances are approximate. The text, photographs and plans are for guidance only and are not necessarily comprehensive. Regulations etc: Any reference to alterations to, or use of, any part of the property does not mean that any necessary planning, building regulations or other consent has been obtained. A buyer or lessee must find out by inspection or in other ways that these matters have been properly dealt with and that all information is correct.



## MAYFAIR SQUARE

1 Mayfair Place, London W1J 8AJ, United Kingdom

+44 (0)207 184 9888 | [info@mayfairsquare.co.uk](mailto:info@mayfairsquare.co.uk) | [www.mayfairsquare.co.uk](http://www.mayfairsquare.co.uk)

---