

HANOVER SQUARE, MAYFAIR, LONDON W1
£2,650 PW



MAYFAIR SQUARE

1 Mayfair Place, London W1J 8AJ, United Kingdom

+44 (0)207 184 9888 | info@mayfairsquare.co.uk | www.mayfairsquare.co.uk

HANOVER SQUARE, MAYFAIR, LONDON W1

£2,650 PW

PROPERTY DESCRIPTION

This exceptional one-bedroom apartment is situated in a luxurious development in the prestigious Mayfair district. The apartment boasts a spacious open plan living and kitchen area seamlessly integrated with the dining space.

The elegantly designed bedroom features its own luxurious en-suite bathroom. The fully fitted kitchen is equipped with top-of-the-line appliances and sleek cabinetry.

With the additional benefit of a guest room, the apartment is flooded with natural light and finished to the highest standards. Situated in the Mandarin Residence, residents can enjoy a range of amenities and services including concierge assistance, a fitness centre, and spa facilities, offering a lifestyle of unparalleled luxury. The apartment at Mandarin Oriental represents refined living in one of London's most exclusive neighbourhoods.

Mayfair Area

Synonymous with luxury and one of the wealthiest places to live in London.

Mayfair is celebrated for its stunning historic architecture, diverse culinary scene, luxurious hotels, and vibrant arts community. Rich in heritage and culture, the neighbourhood boasts an array of art galleries, museums, and cultural venues, inviting visitors to discover exhibitions, cultural events, and the dynamic arts scene that defines Mayfair.

Shopping and Restaurants in Mayfair

Mayfair offers an abundance of exclusive dining venues, upscale bars, and designer boutiques. Renowned luxury brands such as Louis Vuitton, Gucci, and Chanel can be found alongside Mayfair's own Fortnum & Mason department store. Despite its compact size, Mayfair boasts top-tier Michelin-starred restaurants helmed by renowned chefs, adding to its allure as a premier destination.

Parks & Green Spaces

Mayfair is embraced by two expansive parks, Hyde Park offering over 350 acres of lush greenery, and Green Park. Additionally, Grosvenor Square and Mount Street Gardens, nestled in the heart of Mayfair, are cherished havens for residents.

Council Tax Band: TBC



MAYFAIR SQUARE

1 Mayfair Place, London W1J 8AJ, United Kingdom

+44 (0)207 184 9888 | info@mayfairsquare.co.uk | www.mayfairsquare.co.uk

HANOVER SQUARE, MAYFAIR, LONDON W1
£2,650 PW



MAYFAIR SQUARE

1 Mayfair Place, London W1J 8AJ, United Kingdom

+44 (0)207 184 9888 | info@mayfairsquare.co.uk | www.mayfairsquare.co.uk



MAYFAIR SQUARE

1 Mayfair Place, London W1J 8AJ, United Kingdom

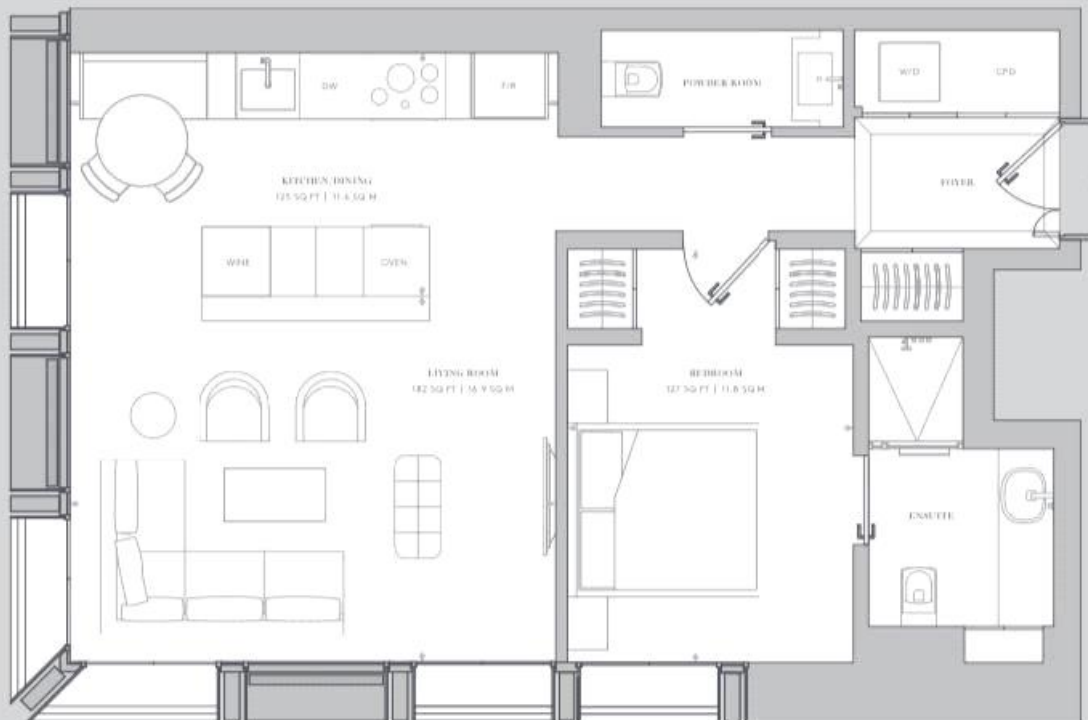
+44 (0)207 184 9888 | info@mayfairsquare.co.uk | www.mayfairsquare.co.uk



MAYFAIR SQUARE

1 Mayfair Place, London W1J 8AJ, United Kingdom

+44 (0)207 184 9888 | info@mayfairsquare.co.uk | www.mayfairsquare.co.uk



MAYFAIR SQUARE

1 Mayfair Place, London W1J 8AJ, United Kingdom

+44 (0)207 184 9888 | info@mayfairsquare.co.uk | www.mayfairsquare.co.uk

HANOVER SQUARE, MAYFAIR, LONDON W1

£2,650 PW



Energy Efficiency Rating		
	Current	Potential
Very energy efficient - lower running costs		
(92-100) A		
(81-91) B	85	85
(69-80) C		
(55-68) D		
(39-54) E		
(21-38) F		
(1-20) G		
Not energy efficient - higher running costs		
England & Wales	EU Directive 2002/91/EC	

The energy efficiency rating is a measure of the overall efficiency of a home. The higher the rating the more energy efficient the home is and the lower the fuel bills will be.



MAYFAIR SQUARE

1 Mayfair Place, London W1J 8AJ, United Kingdom

+44 (0)207 184 9888 | info@mayfairsquare.co.uk | www.mayfairsquare.co.uk

HANOVER SQUARE, MAYFAIR, LONDON W1

£2,650 PW

FOR MORE INFORMATION PLEASE CONTACT US

Important Notice:

Particulars: These particulars are not an offer or contract, nor part of one. You should not rely on statements by Mayfair Square in the particulars or by word of mouth or in writing ("information") as being factually accurate about the property, its condition or its value. Neither Mayfair Square nor any joint agent has any authority to make any representations about the property, and accordingly any information given is entirely without responsibility on the part of the agents, seller(s), lessor(s) or landlord(s).

Any areas, measurements or distances are approximate. The text, photographs and plans are for guidance only and are not necessarily comprehensive. Regulations etc: Any reference to alterations to, or use of, any part of the property does not mean that any necessary planning, building regulations or other consent has been obtained. A buyer or lessee must find out by inspection or in other ways that these matters have been properly dealt with and that all information is correct.



MAYFAIR SQUARE

1 Mayfair Place, London W1J 8AJ, United Kingdom

+44 (0)207 184 9888 | info@mayfairsquare.co.uk | www.mayfairsquare.co.uk
