

MOXON STREET, MARYLEBONE, LONDON W1

£3,250,000



## MAYFAIR SQUARE

1 Mayfair Place, London W1J 8AJ, United Kingdom

+44 (0)207 184 9888 | [info@mayfairsquare.co.uk](mailto:info@mayfairsquare.co.uk) | [www.mayfairsquare.co.uk](http://www.mayfairsquare.co.uk)

# MOXON STREET, MARYLEBONE, LONDON W1

## £3,250,000

---

### PROPERTY DESCRIPTION

Luxury one-bedroom apartments with a study in the heart of Marylebone Village.

This stunning apartment spans over 950 sq ft and offers an exceptional blend of style and comfort, featuring one spacious double bedroom with en-suite, an expansive living area with a seamless dining space, and a sleek, fully-fitted kitchen. With a dedicated study, guest room, and a private balcony, this residence is perfect for modern living. Nestled in an exclusive new development, it comes with secure underground parking and the convenience of a 24-hour concierge service, ensuring a truly sophisticated lifestyle.

Arrange a private viewing today with our team at Mayfair Square to see this exceptional apartment.

#### The Development

The development, located in a district known for its iconic red-brick Georgian architecture, blends tradition with modernity, designed as a contemporary take on classic London mansion blocks. The exterior features glazed terracotta and European-inspired cast metal balustrades, with a standout modern lantern frieze reminiscent of historic London landmarks like The Royal Albert Hall. At its core is a stunning five-level glass-canopied courtyard, offering a peaceful retreat with granite paving, silver birch trees, and a lily pond. Innovative airflow systems provide a seamless transition between the lively streets and serene private residences, creating a harmonious urban living experience.

Please note photographs are CGI's (Computer-generated imagery) and are only for guidance.



## MAYFAIR SQUARE

1 Mayfair Place, London W1J 8AJ, United Kingdom

+44 (0)207 184 9888 | [info@mayfairsquare.co.uk](mailto:info@mayfairsquare.co.uk) | [www.mayfairsquare.co.uk](http://www.mayfairsquare.co.uk)

---

MOXON STREET, MARYLEBONE, LONDON W1  
£3,250,000



**MAYFAIR SQUARE**

1 Mayfair Place, London W1J 8AJ, United Kingdom

+44 (0)207 184 9888 | [info@mayfairsquare.co.uk](mailto:info@mayfairsquare.co.uk) | [www.mayfairsquare.co.uk](http://www.mayfairsquare.co.uk)





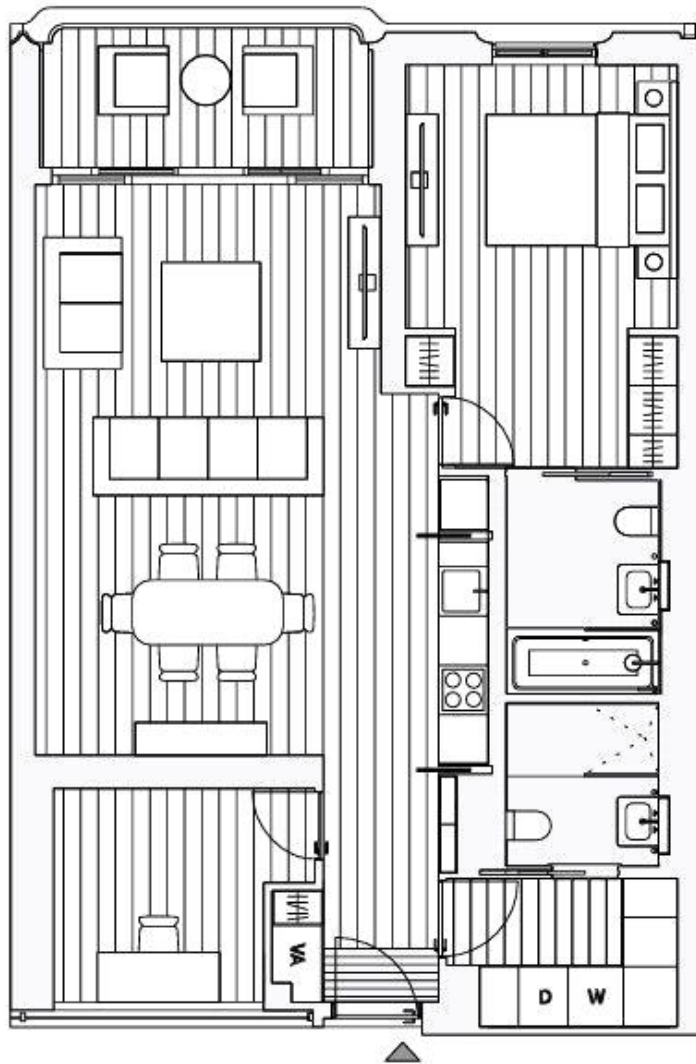
# MAYFAIR SQUARE

1 Mayfair Place, London W1J 8AJ, United Kingdom

+44 (0)207 184 9888 | [info@mayfairsquare.co.uk](mailto:info@mayfairsquare.co.uk) | [www.mayfairsquare.co.uk](http://www.mayfairsquare.co.uk)



Living/kitchen/dining	4.9m x 6.9m
Master bedroom	3.3m x 2.9m
Master bathroom	1.8m x 2.6m
Study	2.6m x 2.5m
Guest bathroom	1.8m x 2.0m
<b>Total *</b>	
	89m <sup>2</sup>
	896sqft
<b>Balcony *</b>	
	6.0m <sup>2</sup>
	60sqft



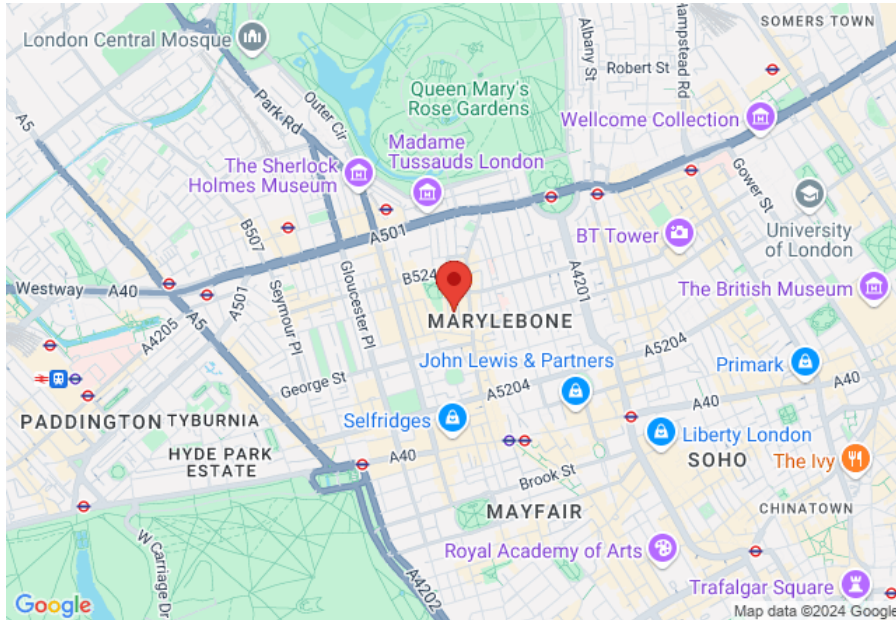
# MAYFAIR SQUARE


1 Mayfair Place, London W1J 8AJ, United Kingdom

+44 (0)207 184 9888 | [info@mayfairsquare.co.uk](mailto:info@mayfairsquare.co.uk) | [www.mayfairsquare.co.uk](http://www.mayfairsquare.co.uk)

# MOXON STREET, MARYLEBONE, LONDON W1

## £3,250,000



Energy Efficiency Rating		
	Current	Potential
Very energy efficient - lower running costs		
(92-100) <b>A</b>		
(81-91) <b>B</b>		
(69-80) <b>C</b>		
(55-68) <b>D</b>	<b>70</b>	<b>78</b>
(39-54) <b>E</b>		
(21-38) <b>F</b>		
(1-20) <b>G</b>		
Not energy efficient - higher running costs		
<b>England &amp; Wales</b>	EU Directive 2002/91/EC 	

The energy efficiency rating is a measure of the overall efficiency of a home. The higher the rating the more energy efficient the home is and the lower the fuel bills will be.



## MAYFAIR SQUARE

1 Mayfair Place, London W1J 8AJ, United Kingdom

+44 (0)207 184 9888 | info@mayfairsquare.co.uk | www.mayfairsquare.co.uk

MOXON STREET, MARYLEBONE, LONDON W1  
£3,250,000

---

FOR MORE INFORMATION PLEASE CONTACT US

Important Notice:

Particulars: These particulars are not an offer or contract, nor part of one. You should not rely on statements by Mayfair Square in the particulars or by word of mouth or in writing ("information") as being factually accurate about the property, its condition or its value. Neither Mayfair Square nor any joint agent has any authority to make any representations about the property, and accordingly any information given is entirely without responsibility on the part of the agents, seller(s), lessor(s) or landlord(s).

Any areas, measurements or distances are approximate. The text, photographs and plans are for guidance only and are not necessarily comprehensive. Regulations etc: Any reference to alterations to, or use of, any part of the property does not mean that any necessary planning, building regulations or other consent has been obtained. A buyer or lessee must find out by inspection or in other ways that these matters have been properly dealt with and that all information is correct.



**MAYFAIR SQUARE**

1 Mayfair Place, London W1J 8AJ, United Kingdom

+44 (0)207 184 9888 | [info@mayfairsquare.co.uk](mailto:info@mayfairsquare.co.uk) | [www.mayfairsquare.co.uk](http://www.mayfairsquare.co.uk)

---