

NINE ELMS LONDON, VAUXHALL, LONDON SW8

£2,240,000



## MAYFAIR SQUARE

1 Mayfair Place, London W1J 8AJ, United Kingdom

+44 (0)207 184 9888 | [info@mayfairsquare.co.uk](mailto:info@mayfairsquare.co.uk) | [www.mayfairsquare.co.uk](http://www.mayfairsquare.co.uk)

---

# NINE ELMS LONDON, VAUXHALL, LONDON SW8

## £2,240,000

---

### PROPERTY DESCRIPTION

We have a selection of three bedroom apartments for sale at DAMAC Tower.

The ultra-modern DAMAC Tower will stand out as a new landmark on the London skyline with its 50 stories.

An inspiration in luxury living, inside and out, this design combines stone, terracotta, and glass.

With its unique, balanced architecture, the building creates remarkable views from every angle.

DAMAC Tower Nine Elms London brings you the ultimate living experience in partnership with Versace, the global symbol of luxury and glamour.

This is the first collaboration between Versace Home and a new residential property development in London, where you can enjoy lavish interiors designed by the luxury designer.

DAMAC Tower offers residents an array of luxury amenities, including a resident lounge with stunning views, gym facilities with state-of-the-art equipment, health and wellness programs, private cinemas, a children's play area, elevated housekeeping service, and 24-hour concierge service.

Nine Elms is home to the New Covent Garden Market, the brand-new US Embassy, and the famous Battersea Power Station, one of London's most iconic landmarks.

As part of the planned regeneration, the area is also blessed with almost two miles of Thames riverfront, which will be lined with cafes, bars, restaurants, cultural attractions, and public spaces.

Please note photographs are CGI's (Computer-generated imagery) and only for guidance.



## MAYFAIR SQUARE

1 Mayfair Place, London W1J 8AJ, United Kingdom

+44 (0)207 184 9888 | [info@mayfairsquare.co.uk](mailto:info@mayfairsquare.co.uk) | [www.mayfairsquare.co.uk](http://www.mayfairsquare.co.uk)

---

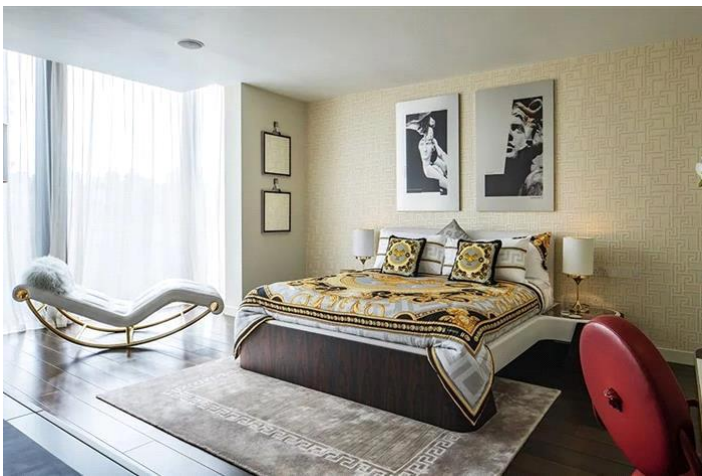
NINE ELMS LONDON, VAUXHALL, LONDON SW8  
£2,240,000



**MAYFAIR SQUARE**

1 Mayfair Place, London W1J 8AJ, United Kingdom

+44 (0)207 184 9888 | [info@mayfairsquare.co.uk](mailto:info@mayfairsquare.co.uk) | [www.mayfairsquare.co.uk](http://www.mayfairsquare.co.uk)



## MAYFAIR SQUARE

1 Mayfair Place, London W1J 8AJ, United Kingdom

+44 (0)207 184 9888 | [info@mayfairsquare.co.uk](mailto:info@mayfairsquare.co.uk) | [www.mayfairsquare.co.uk](http://www.mayfairsquare.co.uk)



# MAYFAIR SQUARE

1 Mayfair Place, London W1J 8AJ, United Kingdom

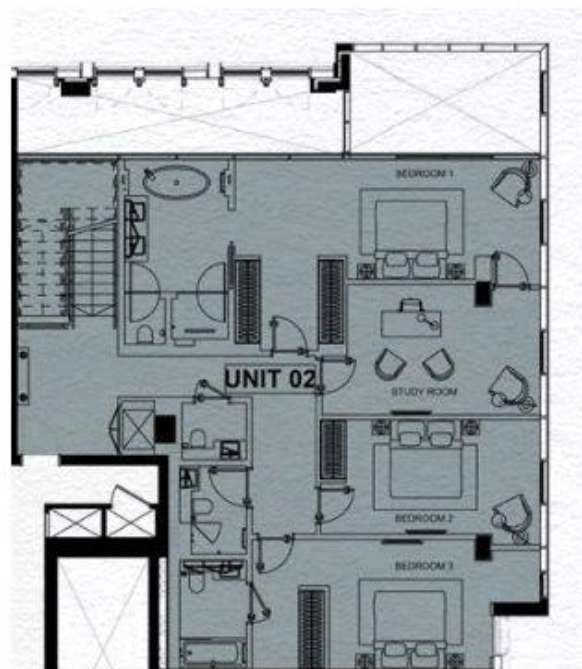
+44 (0)207 184 9888 | [info@mayfairsquare.co.uk](mailto:info@mayfairsquare.co.uk) | [www.mayfairsquare.co.uk](http://www.mayfairsquare.co.uk)



# MAYFAIR SQUARE

1 Mayfair Place, London W1J 8AJ, United Kingdom

+44 (0)207 184 9888 | [info@mayfairsquare.co.uk](mailto:info@mayfairsquare.co.uk) | [www.mayfairsquare.co.uk](http://www.mayfairsquare.co.uk)



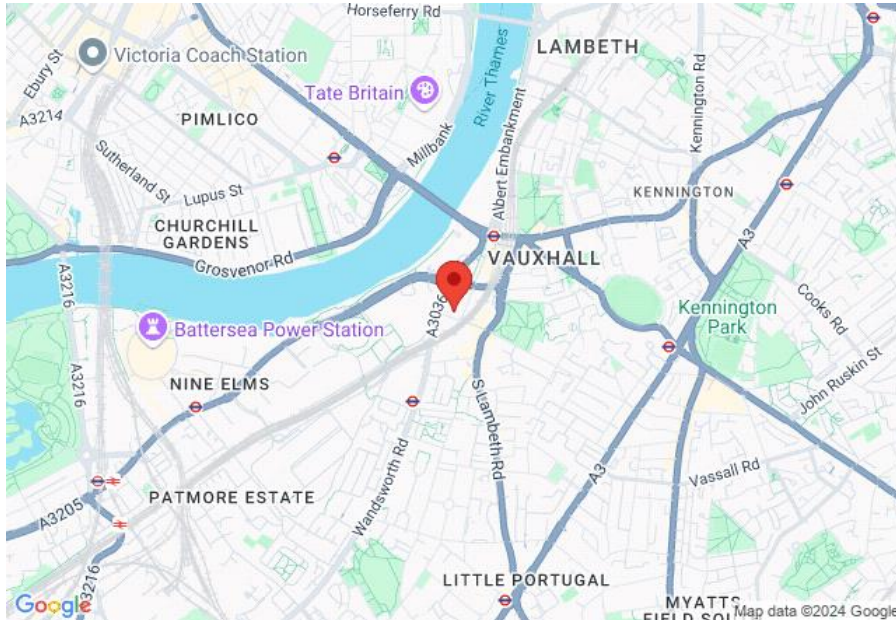
## MAYFAIR SQUARE

1 Mayfair Place, London W1J 8AJ, United Kingdom

+44 (0)207 184 9888 | [info@mayfairsquare.co.uk](mailto:info@mayfairsquare.co.uk) | [www.mayfairsquare.co.uk](http://www.mayfairsquare.co.uk)

# NINE ELMS LONDON, VAUXHALL, LONDON SW8

## £2,240,000



## MAYFAIR SQUARE

1 Mayfair Place, London W1J 8AJ, United Kingdom

+44 (0)207 184 9888 | [info@mayfairsquare.co.uk](mailto:info@mayfairsquare.co.uk) | [www.mayfairsquare.co.uk](http://www.mayfairsquare.co.uk)



# NINE ELMS LONDON, VAUXHALL, LONDON SW8

## £2,240,000

---

FOR MORE INFORMATION PLEASE CONTACT US

### Important Notice:

Particulars: These particulars are not an offer or contract, nor part of one. You should not rely on statements by Mayfair Square in the particulars or by word of mouth or in writing ("information") as being factually accurate about the property, its condition or its value. Neither Mayfair Square nor any joint agent has any authority to make any representations about the property, and accordingly any information given is entirely without responsibility on the part of the agents, seller(s), lessor(s) or landlord(s).

Any areas, measurements or distances are approximate. The text, photographs and plans are for guidance only and are not necessarily comprehensive. Regulations etc: Any reference to alterations to, or use of, any part of the property does not mean that any necessary planning, building regulations or other consent has been obtained. A buyer or lessee must find out by inspection or in other ways that these matters have been properly dealt with and that all information is correct.



## MAYFAIR SQUARE

1 Mayfair Place, London W1J 8AJ, United Kingdom

+44 (0)207 184 9888 | [info@mayfairsquare.co.uk](mailto:info@mayfairsquare.co.uk) | [www.mayfairsquare.co.uk](http://www.mayfairsquare.co.uk)

---