

HARRINGTON ROAD, KENSINGTON, LONDON SW7

£7,250,000



**MAYFAIR SQUARE**

1 Mayfair Place, London W1J 8AJ, United Kingdom

+44 (0)207 184 9888 | [info@mayfairsquare.co.uk](mailto:info@mayfairsquare.co.uk) | [www.mayfairsquare.co.uk](http://www.mayfairsquare.co.uk)

# HARRINGTON ROAD, KENSINGTON, LONDON SW7

£7,250,000

---

## PROPERTY DESCRIPTION

An extraordinary penthouse, offering unparalleled 360-degree views of London from its prime location in South Kensington.

The moment you enter, you'll be captivated by the sheer luxury and grandeur that surrounds you. This three-bedroom penthouse offers direct lift access and spans across approximately 4,665 Sq ft including the private wrap around terrace.

The vast semi-open plan reception room is a masterpiece of design, adorned with meticulous decor, creating a perfect space for relaxation and entertainment.

The spacious principal bedroom is a vision of elegance, adorned with exquisite furnishings, and accompanied by a generously sized dressing room and a marbled en-suite bathroom.

Two additional double bedrooms, each boasting its own en-suite shower room, provide a haven of comfort and convenience for both family and guests.

A chef's dream, the modern kitchen boasts state-of-the-art appliances and the finest finishes, making every culinary experience a pleasure.

Step out onto the 360-degree panoramic roof terrace, where you can enjoy evening drink or indulge in the hot tub while soaking in the sensational views over Central London.

For those seeking to maintain their fitness regime without compromising on luxury, a dedicated gym zone awaits, featuring cutting-edge equipment and an ambiance of pure indulgence.

The penthouse goes beyond aesthetics, incorporating a full digital home automation system, seamlessly controlled by an iPad, offering convenience and modernity at your fingertips. From managing blinds and curtains to controlling the state-of-the-art TV and sound systems, technology effortlessly integrates into your lifestyle.

This penthouse is more than just a residence; it's an extraordinary experience that elevates luxurious living to new heights.

Arrange a private viewing today with our team at Mayfair Square to see this exceptional Penthouse Apartment.



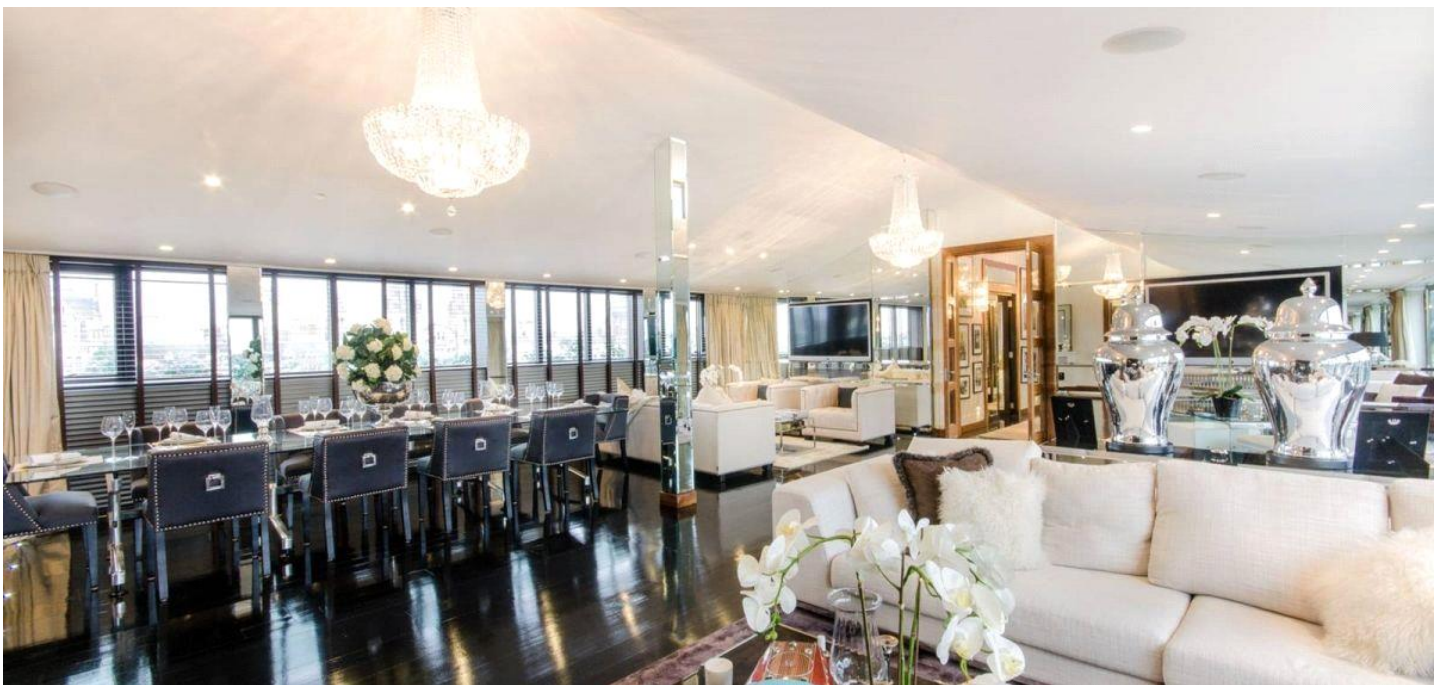
## MAYFAIR SQUARE

1 Mayfair Place, London W1J 8AJ, United Kingdom

+44 (0)207 184 9888 | [info@mayfairsquare.co.uk](mailto:info@mayfairsquare.co.uk) | [www.mayfairsquare.co.uk](http://www.mayfairsquare.co.uk)

---

HARRINGTON ROAD, KENSINGTON, LONDON SW7  
£7,250,000



**MAYFAIR SQUARE**

1 Mayfair Place, London W1J 8AJ, United Kingdom

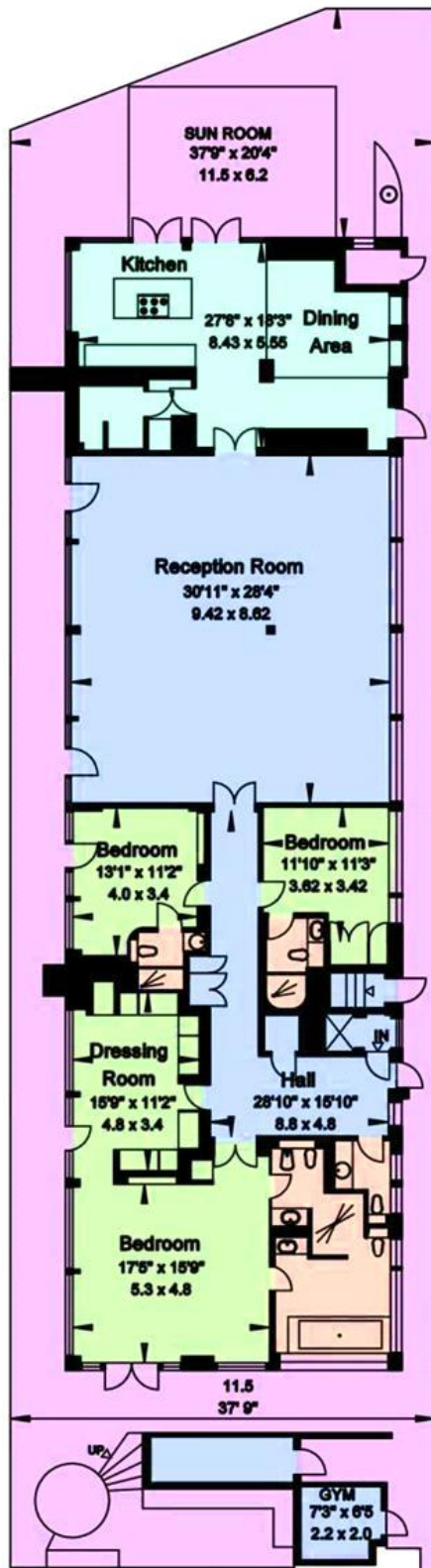
+44 (0)207 184 9888 | [info@mayfairsquare.co.uk](mailto:info@mayfairsquare.co.uk) | [www.mayfairsquare.co.uk](http://www.mayfairsquare.co.uk)



# MAYFAIR SQUARE

1 Mayfair Place, London W1J 8AJ, United Kingdom

+44 (0)207 184 9888 | [info@mayfairsquare.co.uk](mailto:info@mayfairsquare.co.uk) | [www.mayfairsquare.co.uk](http://www.mayfairsquare.co.uk)



**HARRINGTON ROAD  
LONDON SW7**

Gross Internal Area = 284 sq. metres  
 (Including Sun Room & Gym) 3065 sq. feet  
 Gross External Area = 148 sq. metres  
 1600 sq. feet  
 Total = 433 sq. metres/ 4665 sq. feet



**SEVENTH FLOOR**



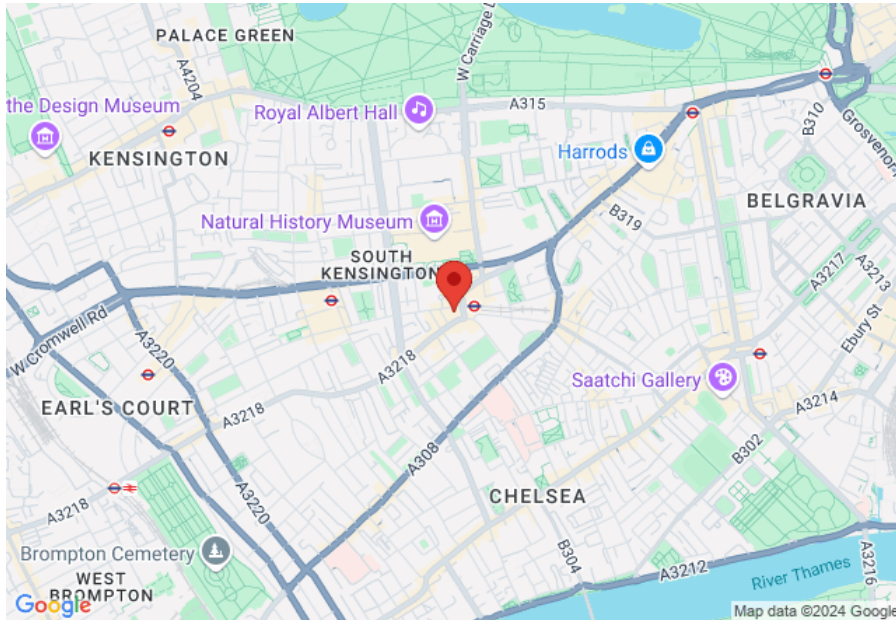
**MAYFAIR SQUARE**


1 Mayfair Place, London W1J 8AJ, United Kingdom

+44 (0)207 184 9888 | info@mayfairsquare.co.uk | www.mayfairsquare.co.uk

# HARRINGTON ROAD, KENSINGTON, LONDON SW7

## £7,250,000



Energy Efficiency Rating		
	Current	Potential
Very energy efficient - lower running costs		
(92-100) <b>A</b>		
(81-91) <b>B</b>		
(69-80) <b>C</b>	72	75
(55-68) <b>D</b>		
(39-54) <b>E</b>		
(21-38) <b>F</b>		
(1-20) <b>G</b>		
Not energy efficient - higher running costs		
<b>England &amp; Wales</b>	EU Directive 2002/91/EC 	

The energy efficiency rating is a measure of the overall efficiency of a home. The higher the rating the more energy efficient the home is and the lower the fuel bills will be.



## MAYFAIR SQUARE

1 Mayfair Place, London W1J 8AJ, United Kingdom

+44 (0)207 184 9888 | [info@mayfairsquare.co.uk](mailto:info@mayfairsquare.co.uk) | [www.mayfairsquare.co.uk](http://www.mayfairsquare.co.uk)

HARRINGTON ROAD, KENSINGTON, LONDON SW7  
£7,250,000

---

FOR MORE INFORMATION PLEASE CONTACT US

Important Notice:

Particulars: These particulars are not an offer or contract, nor part of one. You should not rely on statements by Mayfair Square in the particulars or by word of mouth or in writing ("information") as being factually accurate about the property, its condition or its value. Neither Mayfair Square nor any joint agent has any authority to make any representations about the property, and accordingly any information given is entirely without responsibility on the part of the agents, seller(s), lessor(s) or landlord(s).

Any areas, measurements or distances are approximate. The text, photographs and plans are for guidance only and are not necessarily comprehensive. Regulations etc: Any reference to alterations to, or use of, any part of the property does not mean that any necessary planning, building regulations or other consent has been obtained. A buyer or lessee must find out by inspection or in other ways that these matters have been properly dealt with and that all information is correct.



**MAYFAIR SQUARE**

1 Mayfair Place, London W1J 8AJ, United Kingdom

+44 (0)207 184 9888 | [info@mayfairsquare.co.uk](mailto:info@mayfairsquare.co.uk) | [www.mayfairsquare.co.uk](http://www.mayfairsquare.co.uk)

---