

WORSHIP STREET, SHOREDITCH, LONDON EC2  
£1,090,000



## MAYFAIR SQUARE

1 Mayfair Place, London W1J 8AJ, United Kingdom

+44 (0)207 184 9888 | [info@mayfairsquare.co.uk](mailto:info@mayfairsquare.co.uk) | [www.mayfairsquare.co.uk](http://www.mayfairsquare.co.uk)

# WORSHIP STREET, SHOREDITCH, LONDON EC2

£1,090,000

---

## PROPERTY DESCRIPTION

Indulge in luxurious living with this exquisite one-bedroom apartment featuring a terrace on the 26th floor.

Floor-to-ceiling windows bathe the interior in radiant natural light, while offering breath taking views across London that enhance the overall beauty of the space.

Set within this iconic 50-story residential tower in the heart of Shoreditch, one of London's most vibrant neighbourhoods, this apartment offers an unparalleled opportunity to indulge in a lifestyle of luxury.

This lateral apartment spans 519 square feet of space, coupled with 40 square feet of outdoor terrace.

Experience an unparalleled level of privacy and comfort in this thoughtfully crafted apartment featuring one double bedroom and one bathroom with high-quality fixtures and fittings, ensuring a heightened sense of refinement and convenience for residents.

A fully equipped designer kitchen awaits, complete with integrated appliances and sleek cabinetry, ensuring culinary endeavours are executed with ease and finesse.

The apartments private terrace provides a captivating backdrop of London's skyline. The terrace invites residents to bask in tranquillity, relish in sun-soaked moments, or entertain guests, the terrace offers the pinnacle of luxury and comfort.

In addition to this luxurious apartment, this iconic residential tower offers residents five star living amenities, a gym and spa, a screening room, a lap pool, a 24-hour concierge, and a tree-lined piazza with shops, restaurants, and bars.

Please contact our team at Mayfair Square to arrange a viewing of this exceptional apartment.

Please note photographs are CGI's (Computer-generated imagery) and only for guidance.



## MAYFAIR SQUARE

1 Mayfair Place, London W1J 8AJ, United Kingdom

+44 (0)207 184 9888 | [info@mayfairsquare.co.uk](mailto:info@mayfairsquare.co.uk) | [www.mayfairsquare.co.uk](http://www.mayfairsquare.co.uk)

---

WORSHIP STREET, SHOREDITCH, LONDON EC2  
£1,090,000



**MAYFAIR SQUARE**

1 Mayfair Place, London W1J 8AJ, United Kingdom

+44 (0)207 184 9888 | [info@mayfairsquare.co.uk](mailto:info@mayfairsquare.co.uk) | [www.mayfairsquare.co.uk](http://www.mayfairsquare.co.uk)





## MAYFAIR SQUARE

1 Mayfair Place, London W1J 8AJ, United Kingdom

+44 (0)207 184 9888 | [info@mayfairsquare.co.uk](mailto:info@mayfairsquare.co.uk) | [www.mayfairsquare.co.uk](http://www.mayfairsquare.co.uk)



## MAYFAIR SQUARE

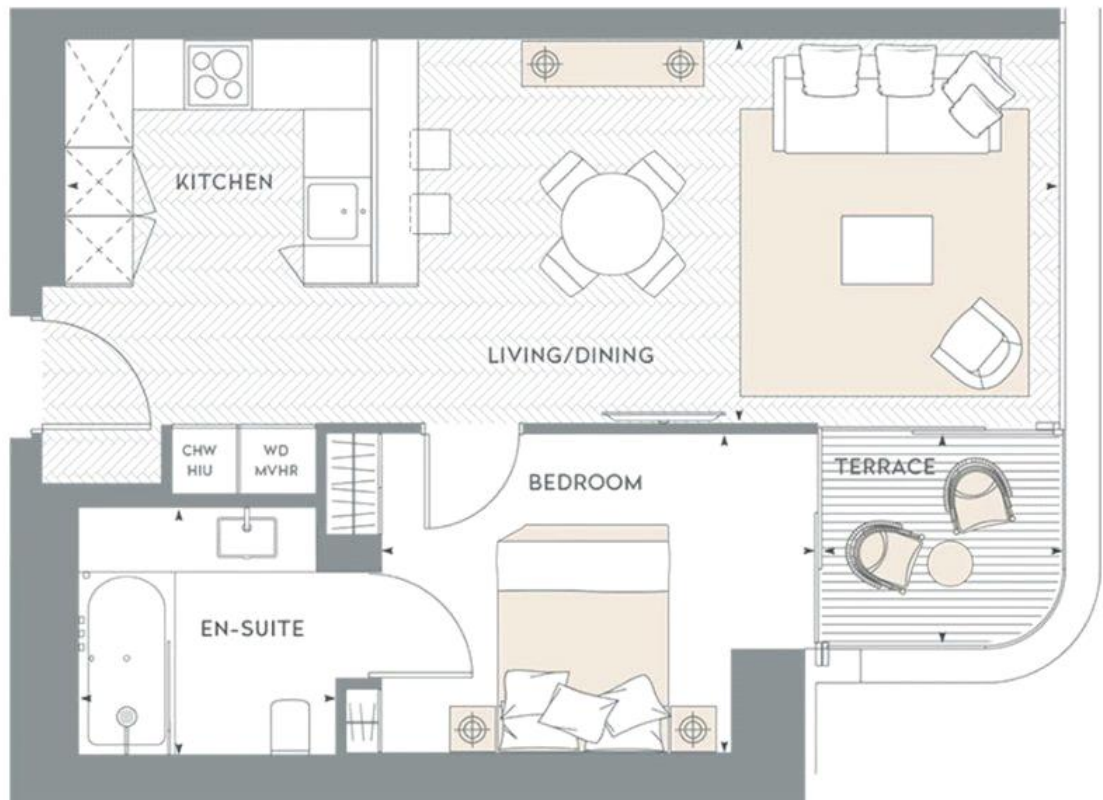
1 Mayfair Place, London W1J 8AJ, United Kingdom

+44 (0)207 184 9888 | [info@mayfairsquare.co.uk](mailto:info@mayfairsquare.co.uk) | [www.mayfairsquare.co.uk](http://www.mayfairsquare.co.uk)

## 1 Bed / 1 Bath

Apartment: 519 Sqft

Terraces: 40 Sqft



# MAYFAIR SQUARE

1 Mayfair Place, London W1J 8AJ, United Kingdom

+44 (0)207 184 9888 | [info@mayfairsquare.co.uk](mailto:info@mayfairsquare.co.uk) | [www.mayfairsquare.co.uk](http://www.mayfairsquare.co.uk)



# WORSHIP STREET, SHOREDITCH, LONDON EC2

£1,090,000



## MAYFAIR SQUARE

1 Mayfair Place, London W1J 8AJ, United Kingdom

+44 (0)207 184 9888 | [info@mayfairsquare.co.uk](mailto:info@mayfairsquare.co.uk) | [www.mayfairsquare.co.uk](http://www.mayfairsquare.co.uk)

# WORSHIP STREET, SHOREDITCH, LONDON EC2

## £1,090,000

---

FOR MORE INFORMATION PLEASE CONTACT US

### Important Notice:

Particulars: These particulars are not an offer or contract, nor part of one. You should not rely on statements by Mayfair Square in the particulars or by word of mouth or in writing ("information") as being factually accurate about the property, its condition or its value. Neither Mayfair Square nor any joint agent has any authority to make any representations about the property, and accordingly any information given is entirely without responsibility on the part of the agents, seller(s), lessor(s) or landlord(s).

Any areas, measurements or distances are approximate. The text, photographs and plans are for guidance only and are not necessarily comprehensive. Regulations etc: Any reference to alterations to, or use of, any part of the property does not mean that any necessary planning, building regulations or other consent has been obtained. A buyer or lessee must find out by inspection or in other ways that these matters have been properly dealt with and that all information is correct.



## MAYFAIR SQUARE

1 Mayfair Place, London W1J 8AJ, United Kingdom

+44 (0)207 184 9888 | [info@mayfairsquare.co.uk](mailto:info@mayfairsquare.co.uk) | [www.mayfairsquare.co.uk](http://www.mayfairsquare.co.uk)

---