

PARK ROAD, ST JOHN'S WOOD, LONDON NW8
£2,265 PW



MAYFAIR SQUARE

1 Mayfair Place, London W1J 8AJ, United Kingdom

+44 (0)207 184 9888 | info@mayfairsquare.co.uk | www.mayfairsquare.co.uk

PARK ROAD, ST JOHN'S WOOD, LONDON NW8

£2,265 PW

PROPERTY DESCRIPTION

This stunning four-bedroom penthouse apartment, situated in a prestigious mansion block, boasts breathtaking views of Regent's Park. Spanning 2,135 square feet, the property features a spacious dual-aspect reception/dining room with a south-facing private balcony offering magnificent park views. The master bedroom includes a dressing room and an en-suite bathroom with a Jacuzzi, providing beautiful park vistas. There are three additional bedrooms, each with en-suite bathrooms, a well-appointed kitchen, a guest bathroom, and a cloakroom.

The penthouse enjoys convenient access to the renowned Lord's Cricket Ground, the expansive green spaces of Regent's Park, and the diverse array of shops, bars, and restaurants on St John's Wood High Street.

Strathmore Court is located within a 10 minute walk from St John's Wood underground station (Jubilee Line), Marylebone station (Bakerloo and national railway).

Strathmore Court would be ideally suited to young professionals or students due to its proximity to the West End, as well as a number of top colleges and universities such as London Business School, University of Westminster and the Royal College of Physicians.

Parks & Green Spaces

Regent's Park with 395 acres of beautiful tranquil space and has a rose garden with over 12,000 roses.

Regents Park is also home the Open Air Theatre and the London Zoo and an Open Air Theatre.

Shopping and Restaurants in St John's Wood

St John's Wood High Street has a variety of fashion boutiques, delis, and restaurants to organic food shops



MAYFAIR SQUARE

1 Mayfair Place, London W1J 8AJ, United Kingdom

+44 (0)207 184 9888 | info@mayfairsquare.co.uk | www.mayfairsquare.co.uk

PARK ROAD, ST JOHN'S WOOD, LONDON NW8
£2,265 PW



MAYFAIR SQUARE

1 Mayfair Place, London W1J 8AJ, United Kingdom

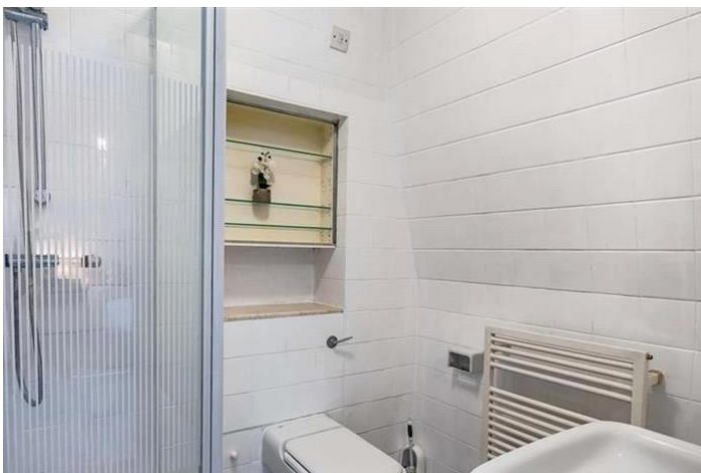
+44 (0)207 184 9888 | info@mayfairsquare.co.uk | www.mayfairsquare.co.uk



MAYFAIR SQUARE

1 Mayfair Place, London W1J 8AJ, United Kingdom

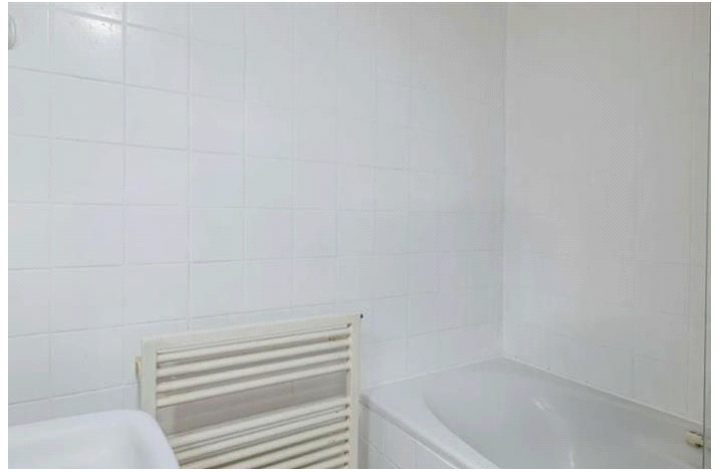
+44 (0)207 184 9888 | info@mayfairsquare.co.uk | www.mayfairsquare.co.uk



MAYFAIR SQUARE

1 Mayfair Place, London W1J 8AJ, United Kingdom

+44 (0)207 184 9888 | info@mayfairsquare.co.uk | www.mayfairsquare.co.uk



MAYFAIR SQUARE

1 Mayfair Place, London W1J 8AJ, United Kingdom

+44 (0)207 184 9888 | info@mayfairsquare.co.uk | www.mayfairsquare.co.uk



MAYFAIR SQUARE

1 Mayfair Place, London W1J 8AJ, United Kingdom

+44 (0)207 184 9888 | info@mayfairsquare.co.uk | www.mayfairsquare.co.uk

**FLAT B
STRATHMORE COURT
PARK ROAD NW8**

APPROX. GROSS INTERNAL AREA *
2135 FT² - 198.34 M²

Illustration For Identification Only, Not to Scale
All Calculations include Any(A) Areas Under 1.5m Head Height.
* As Defined by RICS - Code of Measuring Practice



SIXTH FLOOR

BKR

www.bkrfloorplans.co.uk
T: 0845 257 3823
© BKR 2014



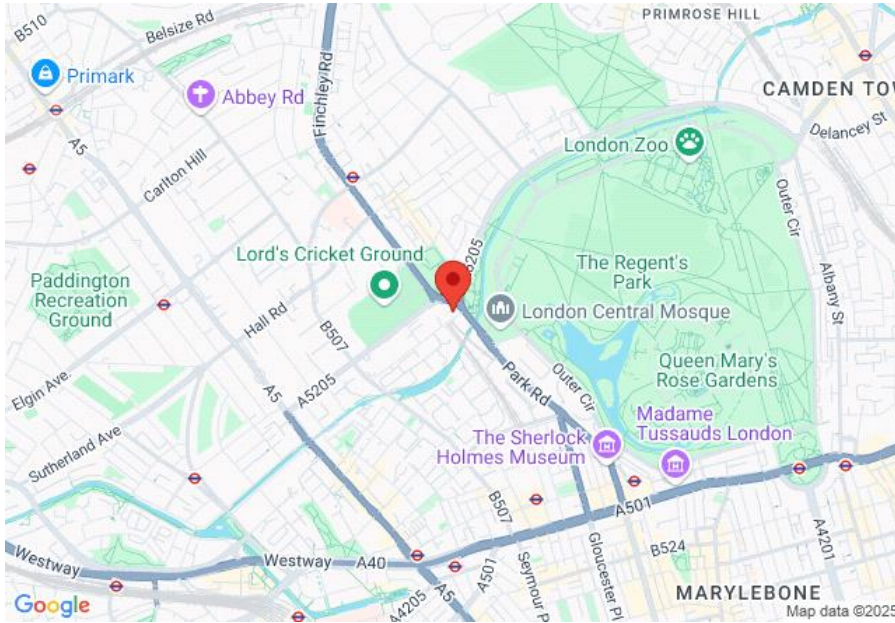
MAYFAIR SQUARE

1 Mayfair Place, London W1J 8AJ, United Kingdom

+44 (0)207 184 9888 | info@mayfairsquare.co.uk | www.mayfairsquare.co.uk

PARK ROAD, ST JOHN'S WOOD, LONDON NW8

£2,265 PW



Energy Efficiency Rating		
	Current	Potential
<i>Very energy efficient - lower running costs</i>		
(92-100) A		
(81-91) B		
(69-80) C		73
(55-68) D		
(39-54) E	51	
(21-38) F		
(1-20) G		
<i>Not energy efficient - higher running costs</i>		
England & Wales	EU Directive 2002/91/EC	

The energy efficiency rating is a measure of the overall efficiency of a home. The higher the rating the more energy efficient the home is and the lower the fuel bills will be.



MAYFAIR SQUARE

1 Mayfair Place, London W1J 8AJ, United Kingdom

+44 (0)207 184 9888 | info@mayfairsquare.co.uk | www.mayfairsquare.co.uk

PARK ROAD, ST JOHN'S WOOD, LONDON NW8
£2,265 PW

FOR MORE INFORMATION PLEASE CONTACT US

Important Notice:

Particulars: These particulars are not an offer or contract, nor part of one. You should not rely on statements by Mayfair Square in the particulars or by word of mouth or in writing ("information") as being factually accurate about the property, its condition or its value. Neither Mayfair Square nor any joint agent has any authority to make any representations about the property, and accordingly any information given is entirely without responsibility on the part of the agents, seller(s), lessor(s) or landlord(s).

Any areas, measurements or distances are approximate. The text, photographs and plans are for guidance only and are not necessarily comprehensive. Regulations etc: Any reference to alterations to, or use of, any part of the property does not mean that any necessary planning, building regulations or other consent has been obtained. A buyer or lessee must find out by inspection or in other ways that these matters have been properly dealt with and that all information is correct.



MAYFAIR SQUARE

1 Mayfair Place, London W1J 8AJ, United Kingdom

+44 (0)207 184 9888 | info@mayfairsquare.co.uk | www.mayfairsquare.co.uk
