

DORSET MEWS, BELGRAVIA, LONDON  
£4,500 PW



MAYFAIR SQUARE

1 Mayfair Place, London W1J 8AJ, United Kingdom

+44 (0)207 184 9888 | [info@mayfairsquare.co.uk](mailto:info@mayfairsquare.co.uk) | [www.mayfairsquare.co.uk](http://www.mayfairsquare.co.uk)

# DORSET MEWS, BELGRAVIA, LONDON

£4,500 PW

---

## PROPERTY DESCRIPTION

Must be seen, stunning three-bedroom house situated in a private gated mews in the heart of Belgravia.

This luxury residence spans 2664 sq ft, exuding luxury at every turn. Step into a spacious living room that flows onto a balcony with beautiful views of the private mews. The master bedroom, a grand 23ft by 20ft sanctuary, boasts an indulgent en-suite bathroom. Two more lavish double bedrooms with en-suites. Entertain in style with a separate bar/dining room and a fully integrated kitchen featuring a chic eat-in area. Other amenities comprise underfloor heating, air conditioning, underground parking, and porter services.

Arrange a private viewing today with our team at Mayfair Square to view this exceptional luxury house in Belgravia.

Living in Belgravia.

Nestled within London's most prestigious enclaves, Belgravia stands as an architectural masterpiece, an embodiment of grandeur. This illustrious district is gracefully positioned to the west of Buckingham Palace, bordered by the elegance of Knightsbridge to the north and the allure of Chelsea to the west.

A haven for shopping and culinary delights, Elizabeth Street, Motcomb Street, and Orange Square exude a charming village ambiance, hosting an array of exceptional restaurants and independent boutiques. Adding to its allure, Belgravia lies in close proximity to one of London's most opulent shopping destinations, boasting renowned names like Harrods, Harvey Nichols, and Sloane Street. Nature and relaxation find their sanctuary in the vastness of Hyde Park, home to the renowned Serpentine Lake, and offering an expansive 350 acres of lush greenery, mere steps away from Belgravia's elegant streets. Adding to the area's charm, the enchanting Belgrave Square Garden, the tranquil Chester Square Garden, and the graceful Eaton Square, adorned with stately London plane trees, provide serene oases amidst the urban landscape.



## MAYFAIR SQUARE

1 Mayfair Place, London W1J 8AJ, United Kingdom

+44 (0)207 184 9888 | [info@mayfairsquare.co.uk](mailto:info@mayfairsquare.co.uk) | [www.mayfairsquare.co.uk](http://www.mayfairsquare.co.uk)

---



DORSET MEWS, BELGRAVIA, LONDON  
£4,500 PW



**MAYFAIR SQUARE**

1 Mayfair Place, London W1J 8AJ, United Kingdom

+44 (0)207 184 9888 | [info@mayfairsquare.co.uk](mailto:info@mayfairsquare.co.uk) | [www.mayfairsquare.co.uk](http://www.mayfairsquare.co.uk)



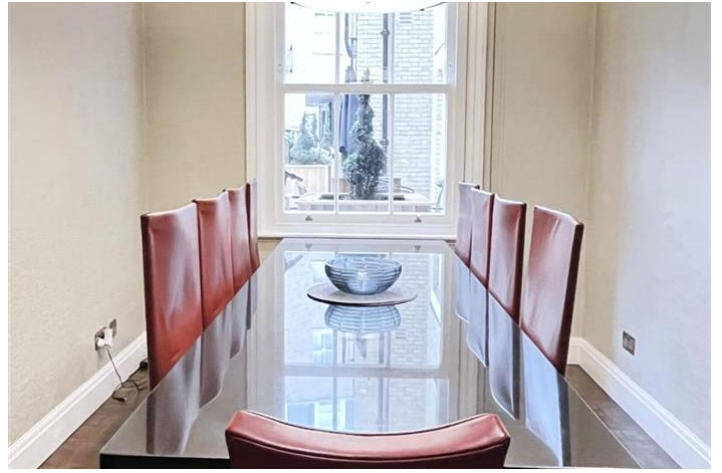


## MAYFAIR SQUARE

1 Mayfair Place, London W1J 8AJ, United Kingdom

+44 (0)207 184 9888 | [info@mayfairsquare.co.uk](mailto:info@mayfairsquare.co.uk) | [www.mayfairsquare.co.uk](http://www.mayfairsquare.co.uk)



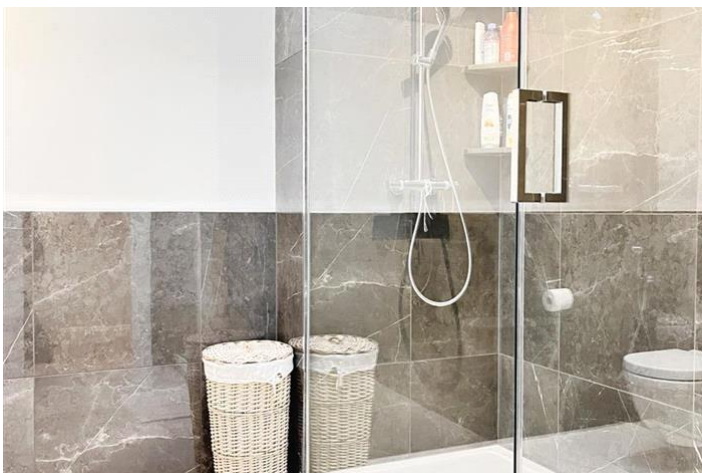


## MAYFAIR SQUARE

1 Mayfair Place, London W1J 8AJ, United Kingdom

+44 (0)207 184 9888 | [info@mayfairsquare.co.uk](mailto:info@mayfairsquare.co.uk) | [www.mayfairsquare.co.uk](http://www.mayfairsquare.co.uk)





## MAYFAIR SQUARE

1 Mayfair Place, London W1J 8AJ, United Kingdom

+44 (0)207 184 9888 | [info@mayfairsquare.co.uk](mailto:info@mayfairsquare.co.uk) | [www.mayfairsquare.co.uk](http://www.mayfairsquare.co.uk)



## MAYFAIR SQUARE

1 Mayfair Place, London W1J 8AJ, United Kingdom

+44 (0)207 184 9888 | [info@mayfairsquare.co.uk](mailto:info@mayfairsquare.co.uk) | [www.mayfairsquare.co.uk](http://www.mayfairsquare.co.uk)



# MAYFAIR SQUARE

1 Mayfair Place, London W1J 8AJ, United Kingdom

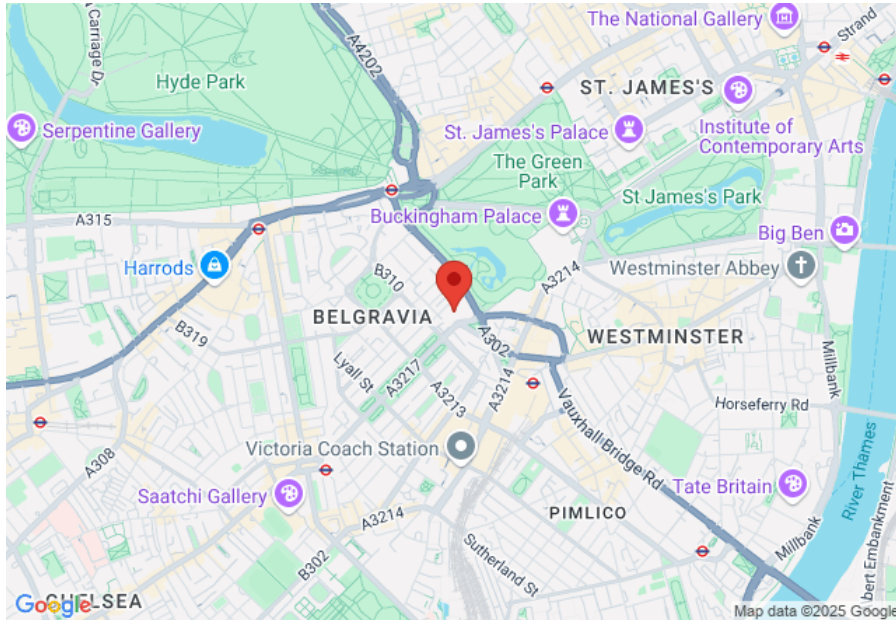
+44 (0)207 184 9888 | [info@mayfairsquare.co.uk](mailto:info@mayfairsquare.co.uk) | [www.mayfairsquare.co.uk](http://www.mayfairsquare.co.uk)

---



# DORSET MEWS, BELGRAVIA, LONDON

## £4,500 PW



Energy Efficiency Rating		
	Current	Potential
Very energy efficient - lower running costs		
(92-100) <b>A</b>		
(81-91) <b>B</b>		
(69-80) <b>C</b>		<b>78</b>
(55-68) <b>D</b>	<b>68</b>	
(39-54) <b>E</b>		
(21-38) <b>F</b>		
(1-20) <b>G</b>		
Not energy efficient - higher running costs		
<b>England &amp; Wales</b>	EU Directive 2002/91/EC	

The energy efficiency rating is a measure of the overall efficiency of a home. The higher the rating the more energy efficient the home is and the lower the fuel bills will be.



## MAYFAIR SQUARE

1 Mayfair Place, London W1J 8AJ, United Kingdom

+44 (0)207 184 9888 | info@mayfairsquare.co.uk | www.mayfairsquare.co.uk

# DORSET MEWS, BELGRAVIA, LONDON

## £4,500 PW

---

FOR MORE INFORMATION PLEASE CONTACT US

### Important Notice:

Particulars: These particulars are not an offer or contract, nor part of one. You should not rely on statements by Mayfair Square in the particulars or by word of mouth or in writing ("information") as being factually accurate about the property, its condition or its value. Neither Mayfair Square nor any joint agent has any authority to make any representations about the property, and accordingly any information given is entirely without responsibility on the part of the agents, seller(s), lessor(s) or landlord(s).

Any areas, measurements or distances are approximate. The text, photographs and plans are for guidance only and are not necessarily comprehensive. Regulations etc: Any reference to alterations to, or use of, any part of the property does not mean that any necessary planning, building regulations or other consent has been obtained. A buyer or lessee must find out by inspection or in other ways that these matters have been properly dealt with and that all information is correct.



## MAYFAIR SQUARE

1 Mayfair Place, London W1J 8AJ, United Kingdom

+44 (0)207 184 9888 | [info@mayfairsquare.co.uk](mailto:info@mayfairsquare.co.uk) | [www.mayfairsquare.co.uk](http://www.mayfairsquare.co.uk)

---