

CRESTA HOUSE, SWISS COTTAGE, LONDON NW3
£995 PW



MAYFAIR SQUARE

1 Mayfair Place, London W1J 8AJ, United Kingdom

+44 (0)207 184 9888 | info@mayfairsquare.co.uk | www.mayfairsquare.co.uk

CRESTA HOUSE, SWISS COTTAGE, LONDON NW3

£995 PW

PROPERTY DESCRIPTION

Stunning Recently Refurbished Three-Bedroom Duplex Apartment with Panoramic Views of London.

This exceptional modern duplex apartment has been beautifully refurbished to offer spacious living with a luxurious finish, perfect for those seeking contemporary urban living.

Spanning 1,087 sq ft, the property features three generously sized double bedrooms, including a master suite with an en-suite bathroom and access to a private south-facing balcony, boasting breathtaking city views.

The bright and expansive reception room includes a dedicated dining area, ideal for entertaining, while the separate luxury kitchen is fully fitted with sleek, modern appliances, offering both style and functionality.

With its stunning interiors and exceptional views, this apartment provides an unparalleled lifestyle in the heart of the city.

Living in St Johns Wood

A true village atmosphere in the heart of London, St John's Wood appeals to both families and young professionals alike.

The area is world renowned for the iconic Lords Cricket ground and the famous Abbey Road Studios which was the recording venue for the Beatles and Pink Floyd.

Shopping and Eatery in St John's Wood

St John's Wood High Street has a variety of fashion boutiques, delis, and restaurants to organic food shops:

Parks & Green Spaces

Regent's Park with 395 acres of beautiful tranquil space and has a rose garden with over 12,000 roses.

Regents Park is also home to the Open Air Theatre and the London Zoo



MAYFAIR SQUARE

1 Mayfair Place, London W1J 8AJ, United Kingdom

+44 (0)207 184 9888 | info@mayfairsquare.co.uk | www.mayfairsquare.co.uk

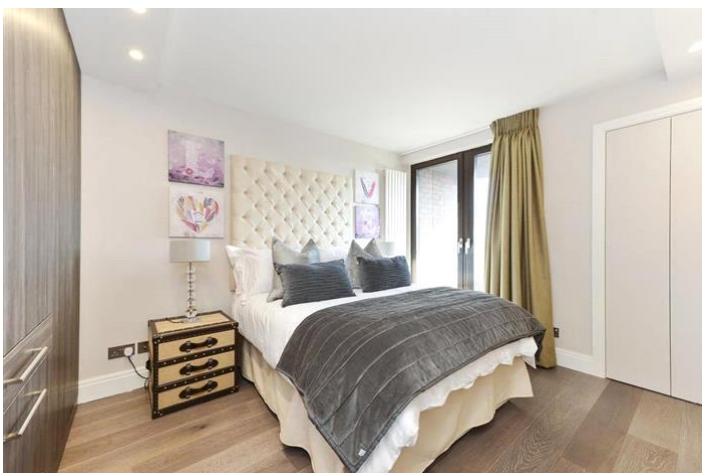
CRESTA HOUSE, SWISS COTTAGE, LONDON NW3
£995 PW



MAYFAIR SQUARE

1 Mayfair Place, London W1J 8AJ, United Kingdom

+44 (0)207 184 9888 | info@mayfairsquare.co.uk | www.mayfairsquare.co.uk



MAYFAIR SQUARE

1 Mayfair Place, London W1J 8AJ, United Kingdom

+44 (0)207 184 9888 | info@mayfairsquare.co.uk | www.mayfairsquare.co.uk



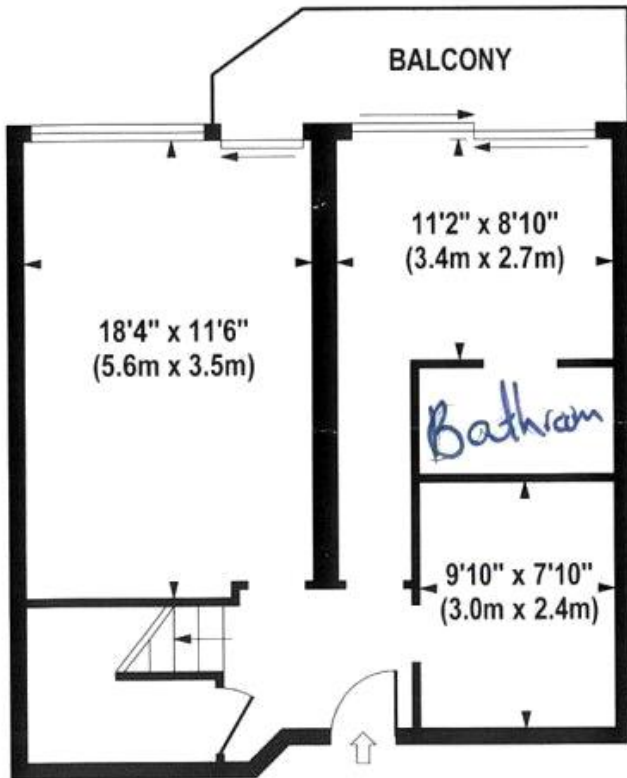
MAYFAIR SQUARE

1 Mayfair Place, London W1J 8AJ, United Kingdom

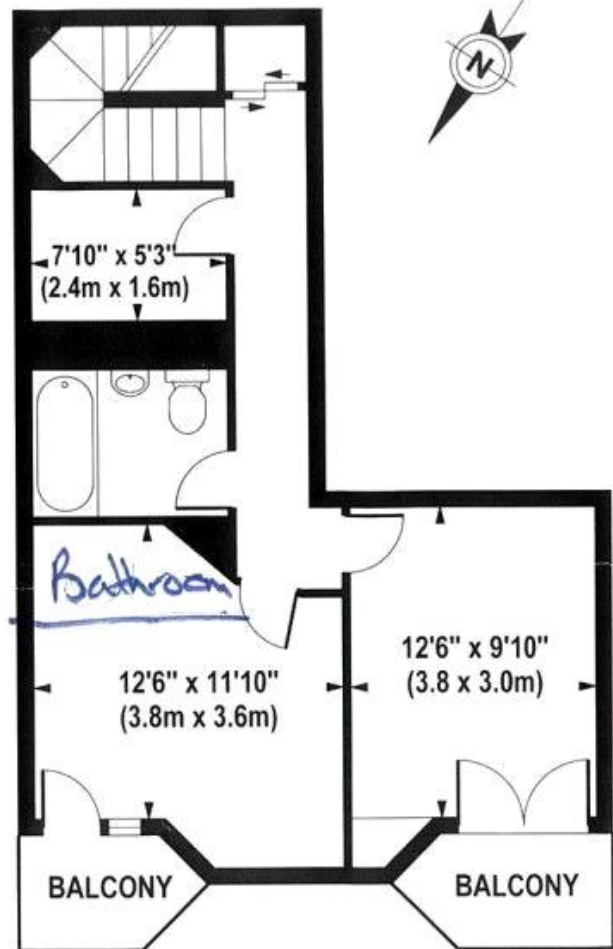
+44 (0)207 184 9888 | info@mayfairsquare.co.uk | www.mayfairsquare.co.uk

CRESTA HOUSE

Approximate Gross Internal Area 1087 sq ft / 101.0 sq m



FIFTH FLOOR
GROSS INTERNAL
FLOOR AREA 571 SQ FT



SIXTH FLOOR
GROSS INTERNAL
FLOOR AREA 516 SQ FT

Although every attempt has been made to ensure accuracy, all measurements are approximate. The floor plan's for illustrative purposes only and not to scale. Measured in accordance to RICS standards.

DE-PHOTOGRAPHY.NET



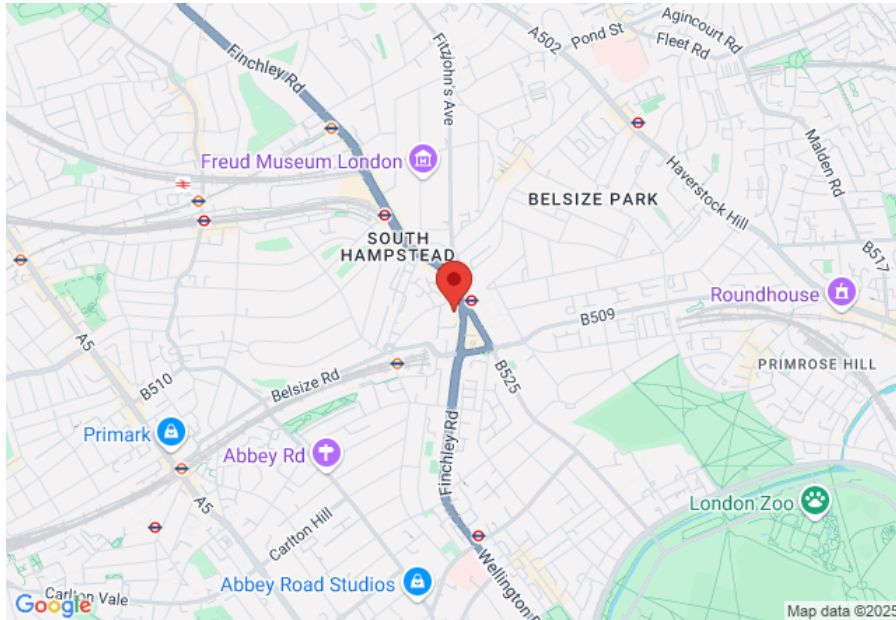
MAYFAIR SQUARE

1 Mayfair Place, London W1J 8AJ, United Kingdom

+44 (0)207 184 9888 | info@mayfairsquare.co.uk | www.mayfairsquare.co.uk

CRESTA HOUSE, SWISS COTTAGE, LONDON NW3

£995 PW



| Energy Efficiency Rating | | |
|---|----------------------------|-----------|
| | Current | Potential |
| Very energy efficient - lower running costs | | |
| (92-100) A | | |
| (81-91) B | | |
| (69-80) C | | 78 |
| (55-68) D | 67 | |
| (39-54) E | | |
| (21-38) F | | |
| (1-20) G | | |
| Not energy efficient - higher running costs | | |
| England & Wales | EU Directive 2002/91/EC | |

The energy efficiency rating is a measure of the overall efficiency of a home. The higher the rating the more energy efficient the home is and the lower the fuel bills will be.



MAYFAIR SQUARE

1 Mayfair Place, London W1J 8AJ, United Kingdom

+44 (0)207 184 9888 | info@mayfairsquare.co.uk | www.mayfairsquare.co.uk

CRESTA HOUSE, SWISS COTTAGE, LONDON NW3

£995 PW

FOR MORE INFORMATION PLEASE CONTACT US

Important Notice:

Particulars: These particulars are not an offer or contract, nor part of one. You should not rely on statements by Mayfair Square in the particulars or by word of mouth or in writing ("information") as being factually accurate about the property, its condition or its value. Neither Mayfair Square nor any joint agent has any authority to make any representations about the property, and accordingly any information given is entirely without responsibility on the part of the agents, seller(s), lessor(s) or landlord(s).

Any areas, measurements or distances are approximate. The text, photographs and plans are for guidance only and are not necessarily comprehensive. Regulations etc: Any reference to alterations to, or use of, any part of the property does not mean that any necessary planning, building regulations or other consent has been obtained. A buyer or lessee must find out by inspection or in other ways that these matters have been properly dealt with and that all information is correct.



MAYFAIR SQUARE

1 Mayfair Place, London W1J 8AJ, United Kingdom

+44 (0)207 184 9888 | info@mayfairsquare.co.uk | www.mayfairsquare.co.uk
