

WORSHIP STREET, SHOREDITCH, LONDON EC2  
£2,550,000



**MAYFAIR SQUARE**

1 Mayfair Place, London W1J 8AJ, United Kingdom

+44 (0)207 184 9888 | [info@mayfairsquare.co.uk](mailto:info@mayfairsquare.co.uk) | [www.mayfairsquare.co.uk](http://www.mayfairsquare.co.uk)

# WORSHIP STREET, SHOREDITCH, LONDON EC2

## £2,550,000

---

### PROPERTY DESCRIPTION

We have a selection of three bedroom apartments for sale at Principle Tower.

Principal Tower is a magnificent residential tower, designed both inside and outside by world-renowned architect Foster + Partners, a soaring testament to the continuing influence and vision of London. With spectacular architecture and breathtaking views, the Principal Tower combines intelligent, elegant design to the highest standard.

In addition to luxurious apartments, this iconic residential tower offers residents five star living amenities, a gym and spa, a screening room, a lap pool, a 24-hour concierge, and a tree-lined piazza with shops, restaurants, and bars.

The interiors were designed by Foster + Partners' own interiors practice, in conjunction with LIV Interiors.

A cool palette, meticulous detailing, and the best materials blend to create elegant, serene spaces. The spectacular view is an integral part of the apartments.

Located within walking distance of trendy Shoreditch, this development offers fast, efficient transportation links as well as cultural and culinary experiences nearby.

Please note photographs are CGI's (Computer-generated imagery) and only for guidance.



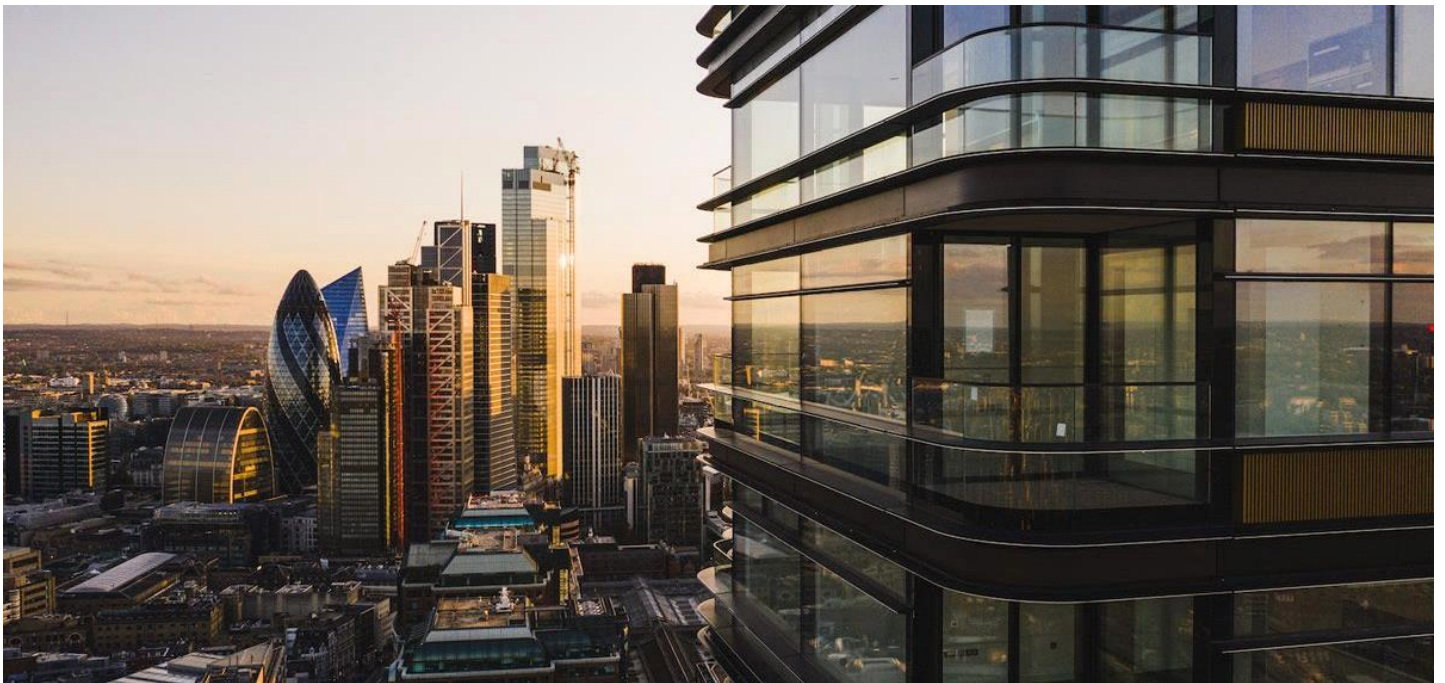
## MAYFAIR SQUARE

1 Mayfair Place, London W1J 8AJ, United Kingdom

+44 (0)207 184 9888 | [info@mayfairsquare.co.uk](mailto:info@mayfairsquare.co.uk) | [www.mayfairsquare.co.uk](http://www.mayfairsquare.co.uk)

---

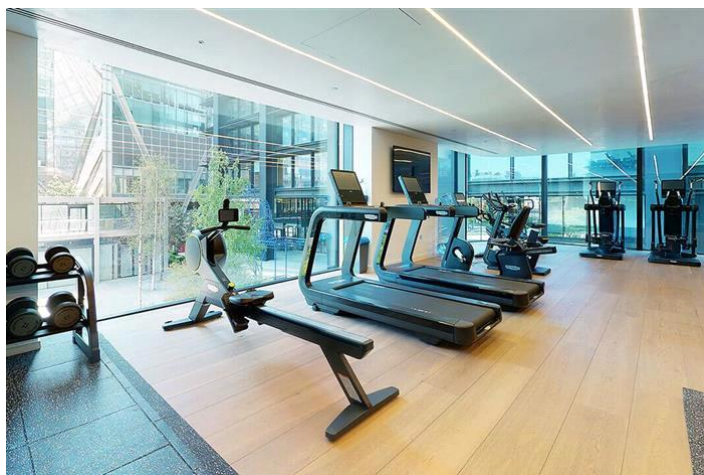
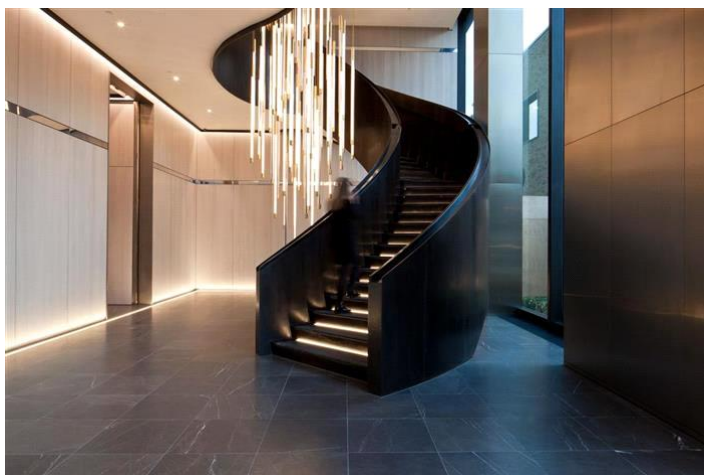
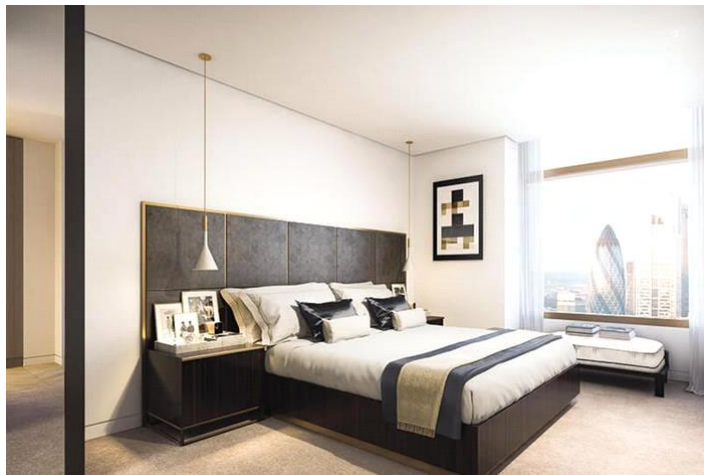
WORSHIP STREET, SHOREDITCH, LONDON EC2  
£2,550,000



MAYFAIR SQUARE

1 Mayfair Place, London W1J 8AJ, United Kingdom

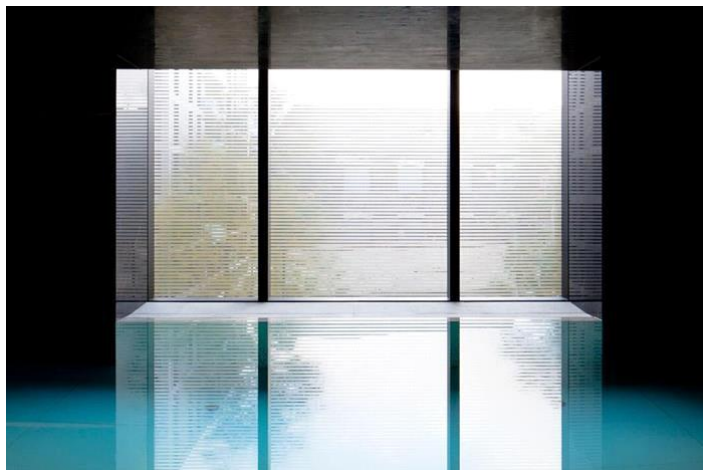
+44 (0)207 184 9888 | [info@mayfairsquare.co.uk](mailto:info@mayfairsquare.co.uk) | [www.mayfairsquare.co.uk](http://www.mayfairsquare.co.uk)



## MAYFAIR SQUARE

1 Mayfair Place, London W1J 8AJ, United Kingdom

+44 (0)207 184 9888 | [info@mayfairsquare.co.uk](mailto:info@mayfairsquare.co.uk) | [www.mayfairsquare.co.uk](http://www.mayfairsquare.co.uk)



# MAYFAIR SQUARE

1 Mayfair Place, London W1J 8AJ, United Kingdom

+44 (0)207 184 9888 | [info@mayfairsquare.co.uk](mailto:info@mayfairsquare.co.uk) | [www.mayfairsquare.co.uk](http://www.mayfairsquare.co.uk)



# WORSHIP STREET, SHOREDITCH, LONDON EC2

£2,550,000



## MAYFAIR SQUARE

1 Mayfair Place, London W1J 8AJ, United Kingdom

+44 (0)207 184 9888 | [info@mayfairsquare.co.uk](mailto:info@mayfairsquare.co.uk) | [www.mayfairsquare.co.uk](http://www.mayfairsquare.co.uk)

# WORSHIP STREET, SHOREDITCH, LONDON EC2

## £2,550,000

---

FOR MORE INFORMATION PLEASE CONTACT US

### Important Notice:

Particulars: These particulars are not an offer or contract, nor part of one. You should not rely on statements by Mayfair Square in the particulars or by word of mouth or in writing ("information") as being factually accurate about the property, its condition or its value. Neither Mayfair Square nor any joint agent has any authority to make any representations about the property, and accordingly any information given is entirely without responsibility on the part of the agents, seller(s), lessor(s) or landlord(s).

Any areas, measurements or distances are approximate. The text, photographs and plans are for guidance only and are not necessarily comprehensive. Regulations etc: Any reference to alterations to, or use of, any part of the property does not mean that any necessary planning, building regulations or other consent has been obtained. A buyer or lessee must find out by inspection or in other ways that these matters have been properly dealt with and that all information is correct.



## MAYFAIR SQUARE

1 Mayfair Place, London W1J 8AJ, United Kingdom

+44 (0)207 184 9888 | [info@mayfairsquare.co.uk](mailto:info@mayfairsquare.co.uk) | [www.mayfairsquare.co.uk](http://www.mayfairsquare.co.uk)

---