

ST. JOHNS WOOD PARK, LONDON NW8

£2,950 PW



MAYFAIR SQUARE

1 Mayfair Place, London W1J 8AJ, United Kingdom

+44 (0)207 184 9888 | info@mayfairsquare.co.uk | www.mayfairsquare.co.uk

ST. JOHNS WOOD PARK, LONDON NW8

£2,950 PW

PROPERTY DESCRIPTION

Exceptional 5-Bedroom House with Garden & Terrace in Prestigious Gated Development.

An elegant and contemporary five-bedroom, four-bathroom home set within a secure gated development with 24-hour porter service, offering over 1,950 sq ft of beautifully designed living space.

The property boasts an expansive open-plan reception area with a fully integrated designer kitchen and generous dining space, perfect for both family living and entertaining. The master bedroom serves as a luxurious retreat, complete with an en-suite bathroom and direct access to a private terrace, ideal for morning coffee or evening relaxation.

Finished to an exceptional standard throughout, the home includes:

- Five spacious bedrooms & four modern bathrooms
- Private garden and sun-drenched terrace
- Air conditioning throughout
- State-of-the-art alarm system & video entry
- Double glazing for added comfort and energy efficiency

Living in St Johns Wood

Located in the heart of London, St John's Wood offers a charming village atmosphere that appeals to both families and young professionals. The area is internationally renowned for the iconic Lord's Cricket Ground and the legendary Abbey Road Studios, famously used by The Beatles and Pink Floyd. St John's Wood High Street is a vibrant hub featuring a mix of boutique fashion stores, organic food shops, delis, and restaurants. Residents also enjoy close proximity to Regent's Park, one of London's most beautiful green spaces, with 395 acres of landscaped gardens, including a stunning rose garden with over 12,000 roses. The park is also home to London Zoo and the Open Air Theatre, offering a unique blend of nature, culture, and leisure right on your doorstep.



MAYFAIR SQUARE

1 Mayfair Place, London W1J 8AJ, United Kingdom

+44 (0)207 184 9888 | info@mayfairsquare.co.uk | www.mayfairsquare.co.uk

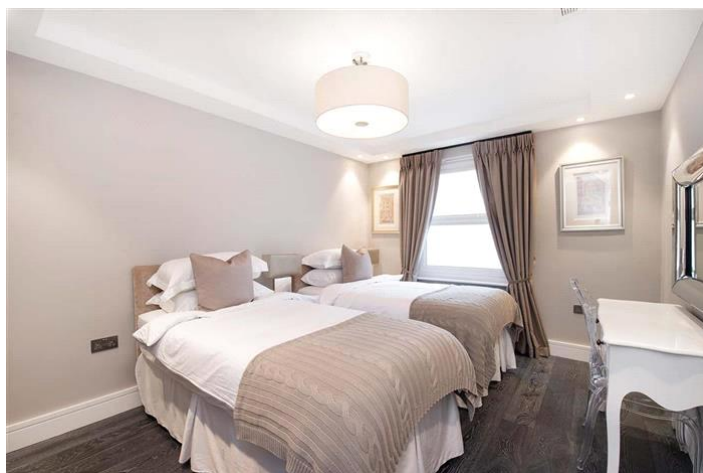
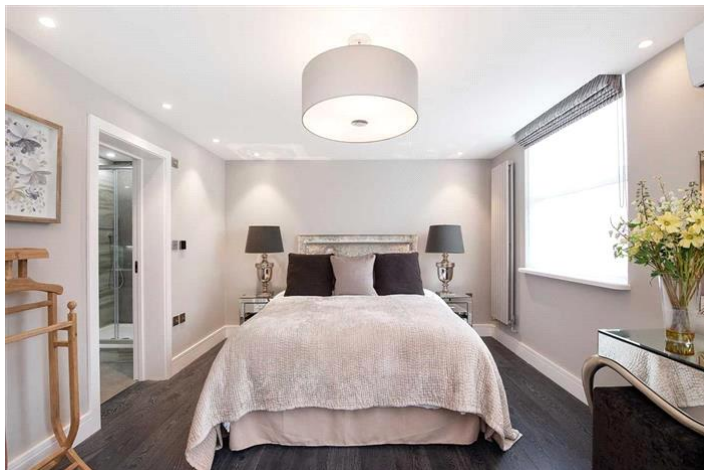
ST. JOHNS WOOD PARK, LONDON NW8
£2,950 PW



MAYFAIR SQUARE

1 Mayfair Place, London W1J 8AJ, United Kingdom

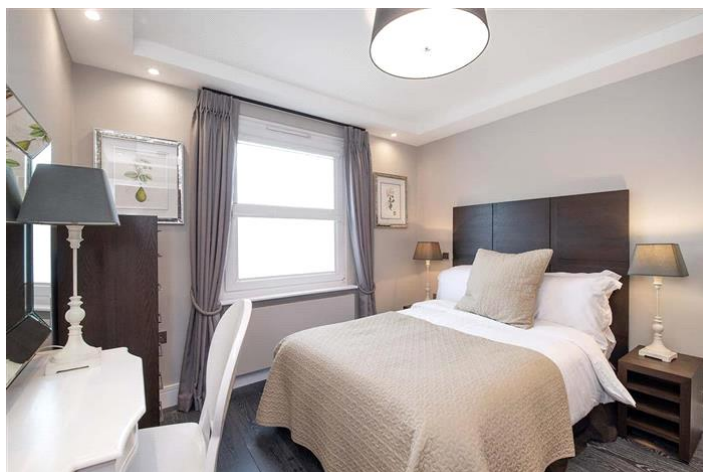
+44 (0)207 184 9888 | info@mayfairsquare.co.uk | www.mayfairsquare.co.uk



MAYFAIR SQUARE

1 Mayfair Place, London W1J 8AJ, United Kingdom

+44 (0)207 184 9888 | info@mayfairsquare.co.uk | www.mayfairsquare.co.uk



MAYFAIR SQUARE

1 Mayfair Place, London W1J 8AJ, United Kingdom

+44 (0)207 184 9888 | info@mayfairsquare.co.uk | www.mayfairsquare.co.uk



MAYFAIR SQUARE

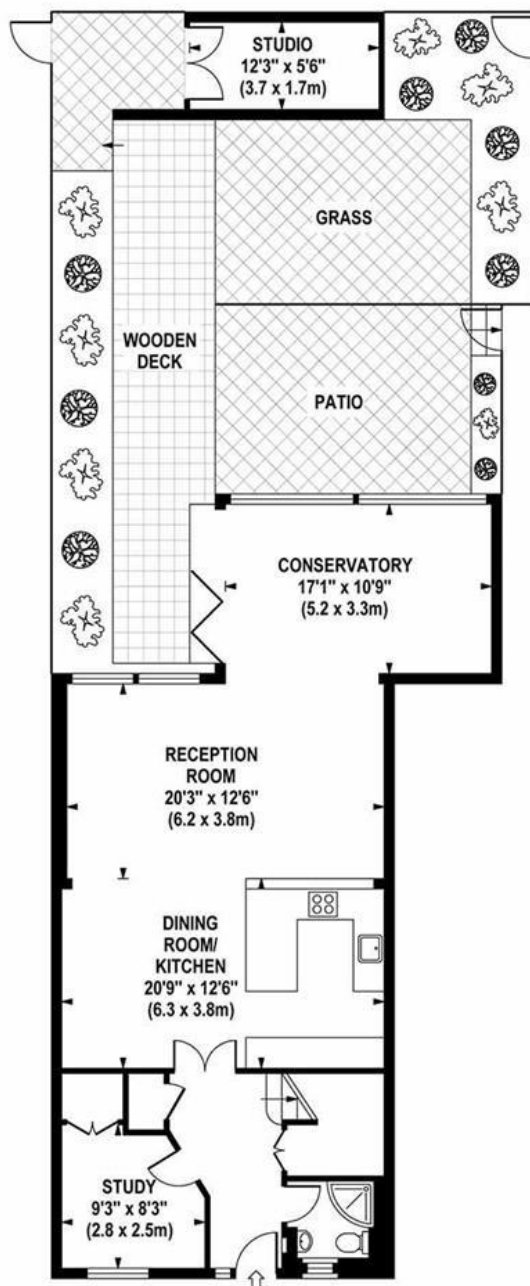
1 Mayfair Place, London W1J 8AJ, United Kingdom

+44 (0)207 184 9888 | info@mayfairsquare.co.uk | www.mayfairsquare.co.uk

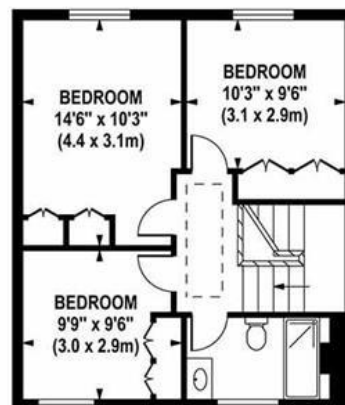
COURT HOUSE

Approximate Gross Internal Area 2024 sq ft / 188.0 sq m
(Including Studio)

Approximate Gross Internal Area 1956 sq ft / 181.7 sq m
(Excluding Studio)



GROUND FLOOR
GROSS INTERNAL
FLOOR AREA 952 SQ FT



SECOND FLOOR
GROSS INTERNAL
FLOOR AREA 502 SQ FT



FIRST FLOOR
GROSS INTERNAL
FLOOR AREA 502 SQ FT

Although every attempt has been made to ensure accuracy, all measurements are approximate.
The floor plan's for illustrative purposes only and not to scale. Measured in accordance to RICS standards.

DE-PHOTOGRAPHY.NET



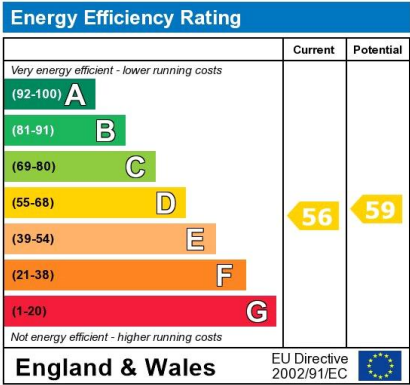
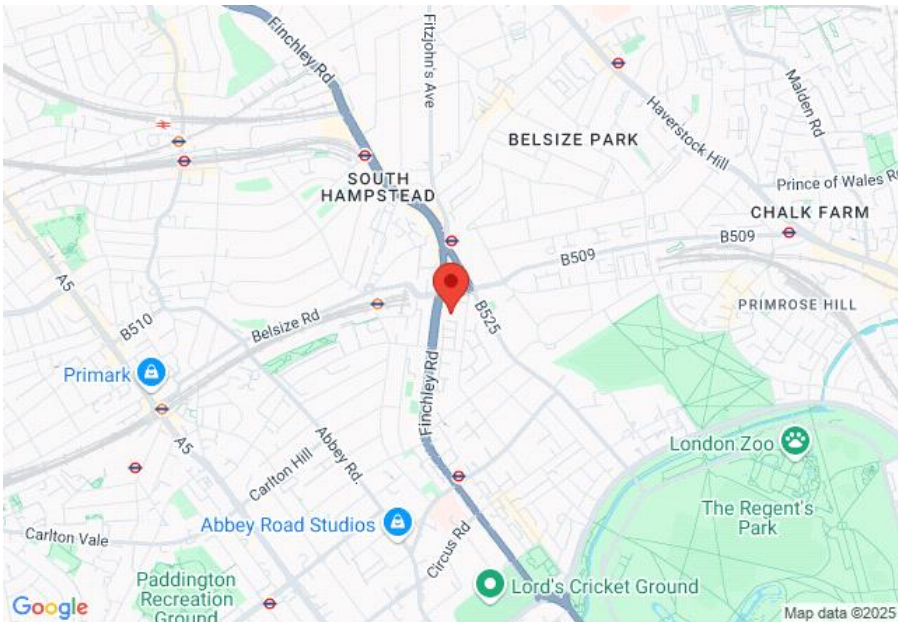
MAYFAIR SQUARE

1 Mayfair Place, London W1J 8AJ, United Kingdom

+44 (0)207 184 9888 | info@mayfairsquare.co.uk | www.mayfairsquare.co.uk

ST. JOHNS WOOD PARK, LONDON NW8

£2,950 PW



The energy efficiency rating is a measure of the overall efficiency of a home. The higher the rating the more energy efficient the home is and the lower the fuel bills will be.



MAYFAIR SQUARE

1 Mayfair Place, London W1J 8AJ, United Kingdom

+44 (0)207 184 9888 | info@mayfairsquare.co.uk | www.mayfairsquare.co.uk

ST. JOHNS WOOD PARK, LONDON NW8

£2,950 PW

FOR MORE INFORMATION PLEASE CONTACT US

Important Notice:

Particulars: These particulars are not an offer or contract, nor part of one. You should not rely on statements by Mayfair Square in the particulars or by word of mouth or in writing ("information") as being factually accurate about the property, its condition or its value. Neither Mayfair Square nor any joint agent has any authority to make any representations about the property, and accordingly any information given is entirely without responsibility on the part of the agents, seller(s), lessor(s) or landlord(s).

Any areas, measurements or distances are approximate. The text, photographs and plans are for guidance only and are not necessarily comprehensive. Regulations etc: Any reference to alterations to, or use of, any part of the property does not mean that any necessary planning, building regulations or other consent has been obtained. A buyer or lessee must find out by inspection or in other ways that these matters have been properly dealt with and that all information is correct.



MAYFAIR SQUARE

1 Mayfair Place, London W1J 8AJ, United Kingdom

+44 (0)207 184 9888 | info@mayfairsquare.co.uk | www.mayfairsquare.co.uk
